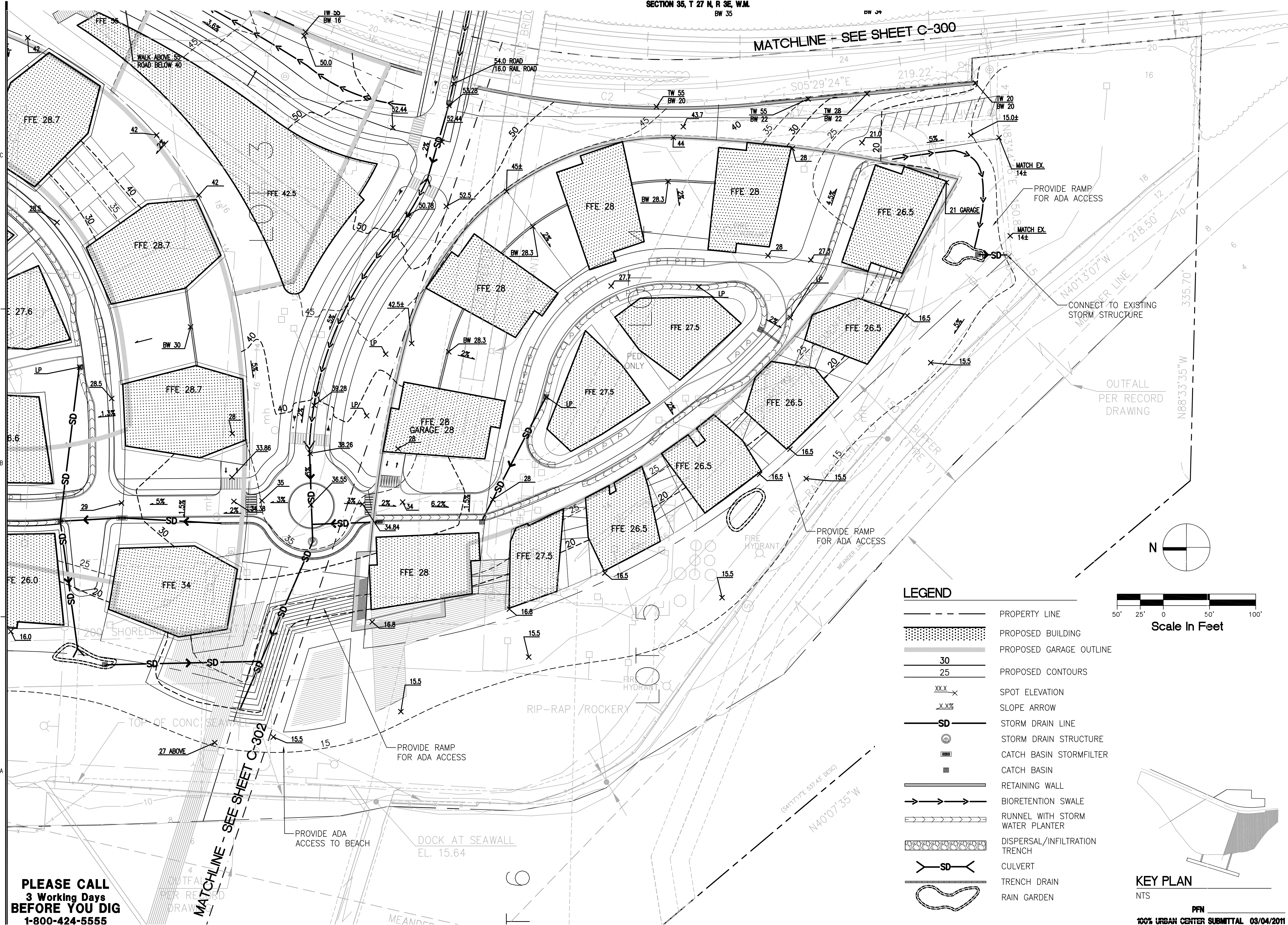


0 1/2" 1" 2"

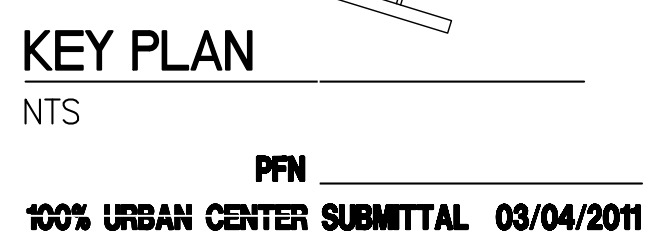
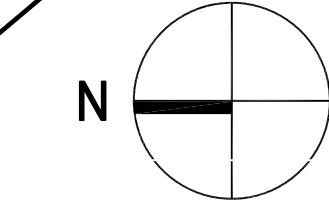
SECTION 35, T 27 N, R 3E, W.M.
BW 35

MATCHLINE - SEE SHEET C-300



LEGEND

- PROPERTY LINE
- PROPOSED BUILDING
- PROPOSED GARAGE OUTLINE
- 30
25
PROPOSED CONTOURS
- XX.X
SPOT ELEVATION
- X.X%
SLOPE ARROW
- SD
STORM DRAIN LINE
- STORM DRAIN STRUCTURE
- CATCH BASIN STORMFILTER
- CATCH BASIN
- RETAINING WALL
- BIORETENTION SWALE
- RUNNEL WITH STORM WATER PLANTER
- DISPERSAL/INFILTRATION TRENCH
- SD
CULVERT
- TRENCH DRAIN
- RAIN GARDEN



PERKINS + WILL

1221 Second Avenue
Suite 200
Seattle, WA 98101
T 206.381.6000
F 206.441.4861
www.perkinswill.com

Point Wells Development

BSRE Point Wells, LP

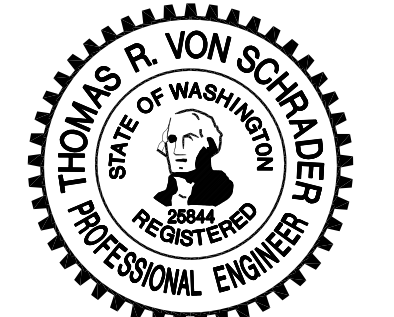
c/o Karr Tuttle Campbell
1201 Third Avenue, Suite 2900
Seattle, Washington 98101

in association with:
CIVIL ENGINEER

svr DESIGN COMPANY
1205 SECOND AVE. SUITE 200
SEATTLE, WA 98101
T 206.223.8326
F 206.223.0125
www.svrdesign.com

Snohomish County Planning & Development Services
APPROVED FOR CONSTRUCTION

By: *Randolph R. Sleight, P.E., P.L.S.*
R/W Permit No. _____



QA/QC REVIEWER

Revisions

NO.	ISSUE	DATE

Sheet Information

Date	03/04/2011
Job Number	169009.000
Drawn	
Checked	
Approved	

Title

GRADING AND DRAINAGE PLAN - SOUTH VILLAGE

Sheet

C-303

NOT Issued for Construction

Copyright © 2010 Perkins+Will

Mar 03, 2011 - 4:09pm
C:\p\090308c_PWP\Current_UC\WP_C-303-GRAD.dwg
jefz

**PLEASE CALL
3 Working Days
BEFORE YOU DIG
1-800-424-5555**