

SECTION 35, T 27 N, R 3E, W.M.

**PERKINS  
+WILL**  
1221 Second Avenue  
Suite 200  
Seattle, WA 98101  
T 206.381.6000  
F 206.441.4861  
www.perkinswill.com

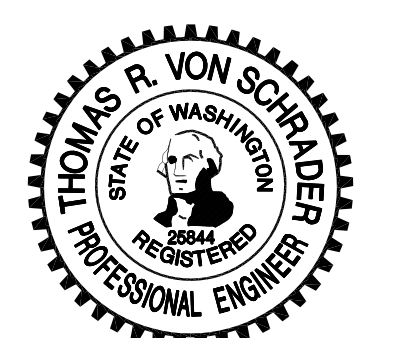
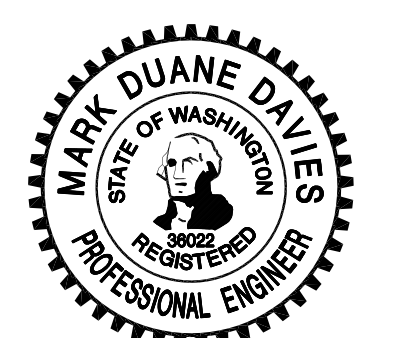
**Point Wells  
Development**

**BSRE  
Point Wells, LP**  
c/o Karr Tuttle Campbell  
1201 Third Avenue, Suite 2900  
Seattle, Washington 98101  
in association with:  
CIVIL ENGINEER

**svr DESIGN COMPANY**  
1205 SECOND AVE. SUITE 200  
SEATTLE, WA 98101  
T 206.223.0326  
F 206.223.0125  
www.svrdesign.com

Snohomish County Planning & Development Services  
APPROVED FOR CONSTRUCTION

By: Randolph R. Sleight, P.E., P.L.S.  
R/W Permit No. \_\_\_\_\_



QA/QC REVIEWER

**Revisions**

NO.	ISSUE	DATE

**Sheet Information**

Date	03/04/2011
Job Number	169009.000
Drawn	
Checked	
Approved	

**Title**

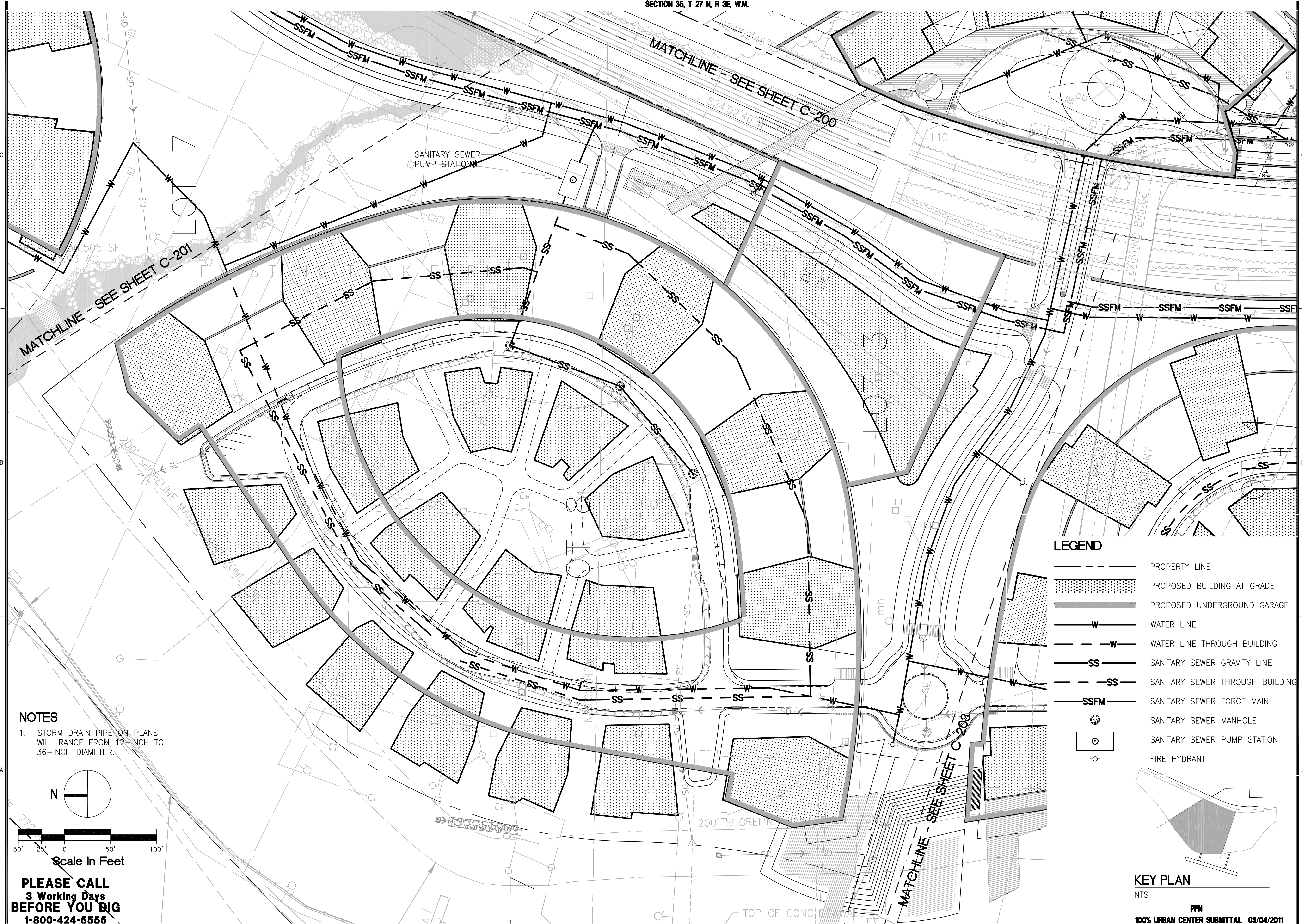
**UTILITY PLAN -  
CENTRAL VILLAGE**

**Sheet**

**C-202**

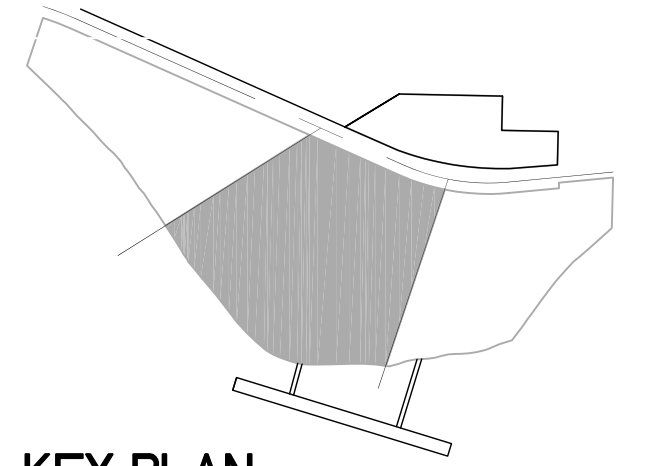
**NOT Issued for Construction**

Copyright © 2010 Perkins+Will



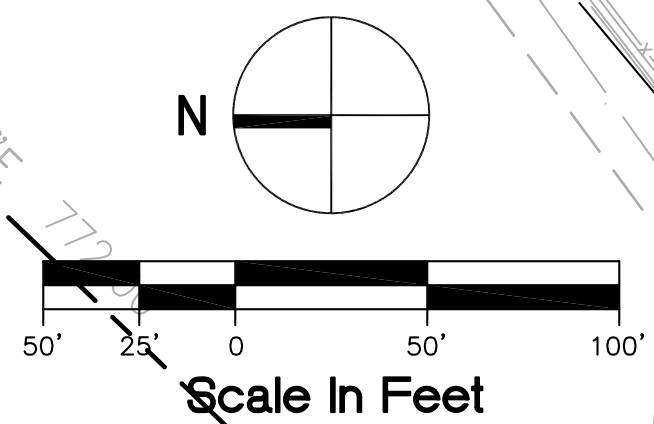
**LEGEND**

- PROPERTY LINE
- PROPOSED BUILDING AT GRADE
- PROPOSED UNDERGROUND GARAGE
- WATER LINE
- WATER LINE THROUGH BUILDING
- SANITARY SEWER GRAVITY LINE
- SANITARY SEWER THROUGH BUILDING
- SANITARY SEWER FORCE MAIN
- SANITARY SEWER MANHOLE
- SANITARY SEWER PUMP STATION
- FIRE HYDRANT



**KEY PLAN**  
NTS  
PFN  
100% URBAN CENTER SUBMITTAL 03/04/2011

**NOTES**  
1. STORM DRAIN PIPE ON PLANS WILL RANGE FROM 12-INCH TO 36-INCH DIAMETER.



**PLEASE CALL  
3 Working Days  
BEFORE YOU DIG  
1-800-424-5555**

Mar 03, 2011 - 4:04pm  
 C:\09c\090308c\_PWP\Current\_UC\PWP\_C-202-UTIL.dwg  
 jefz