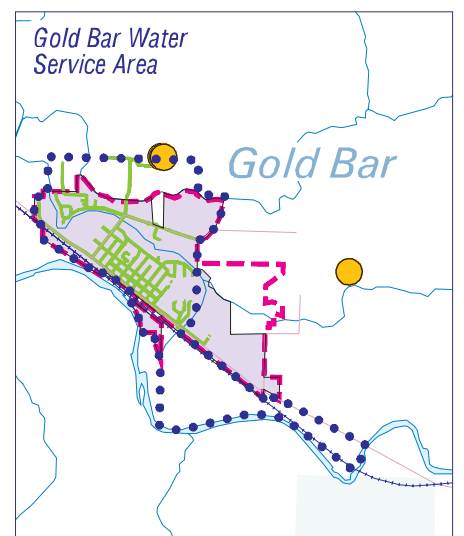
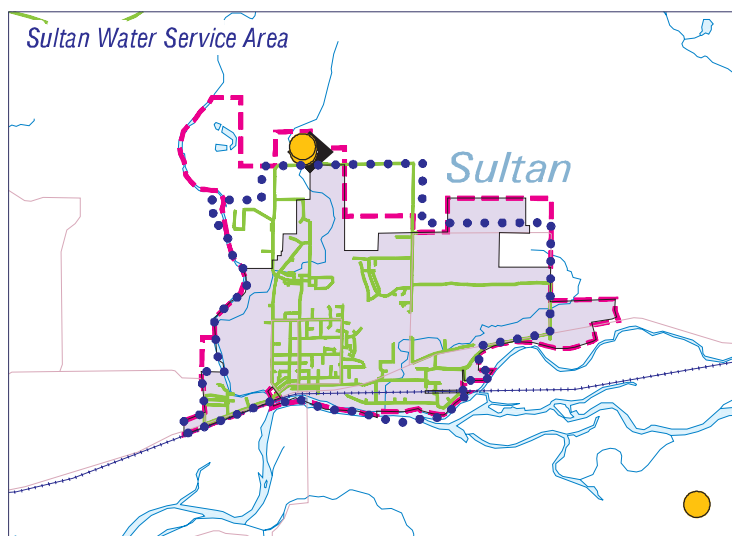
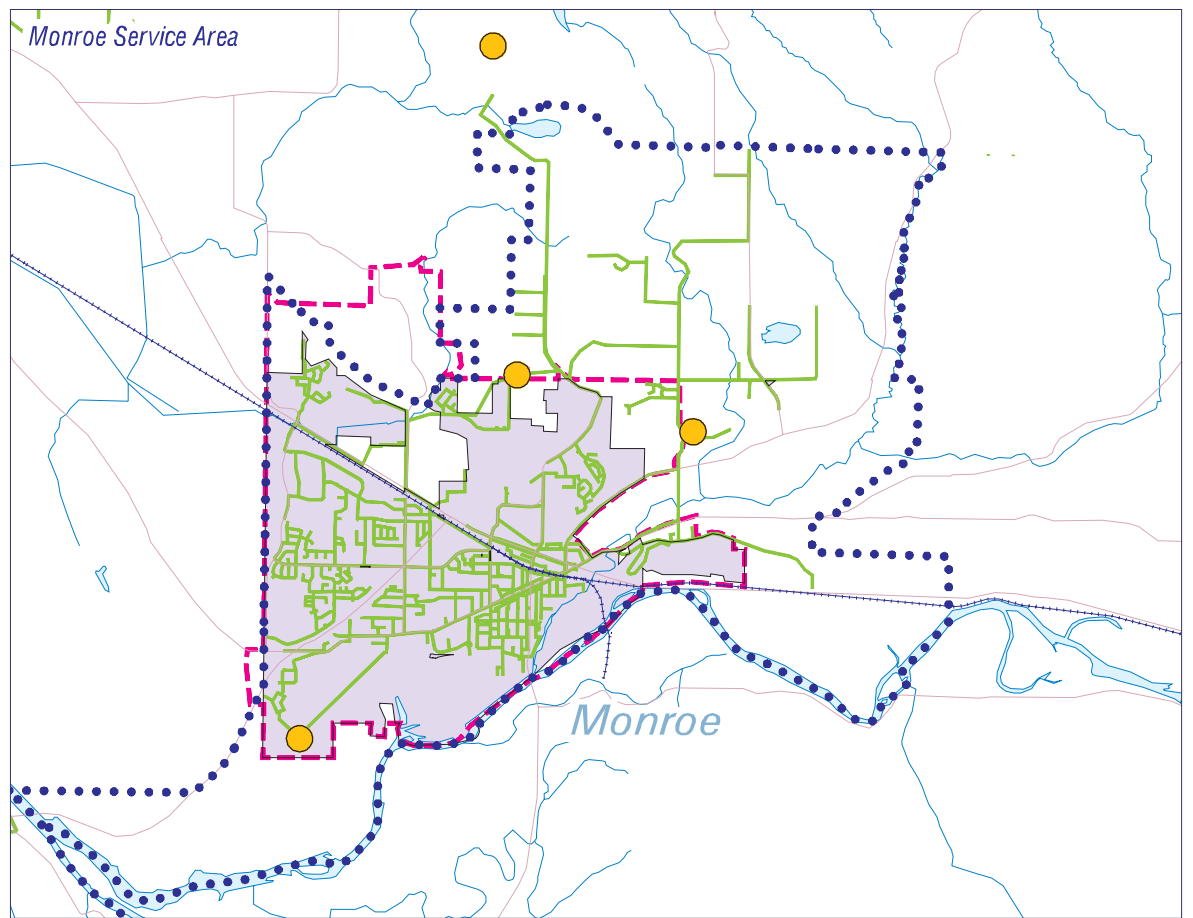
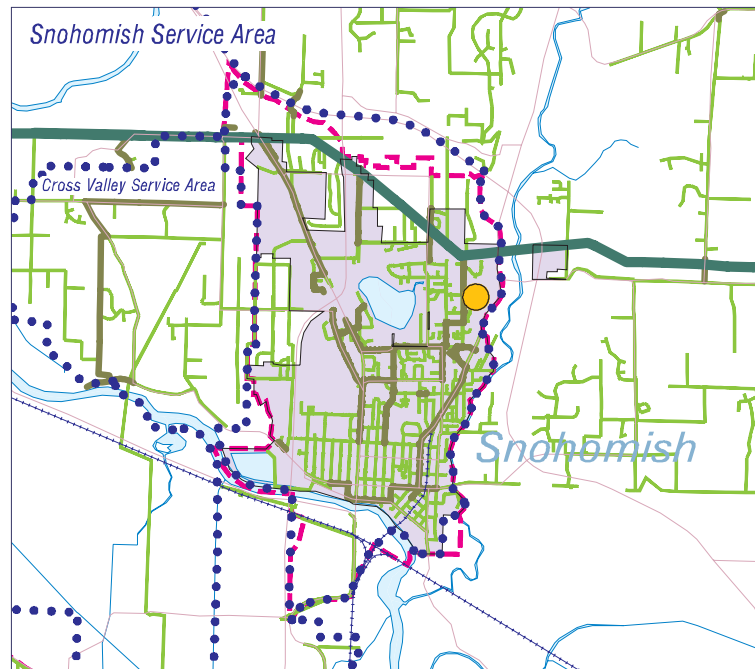
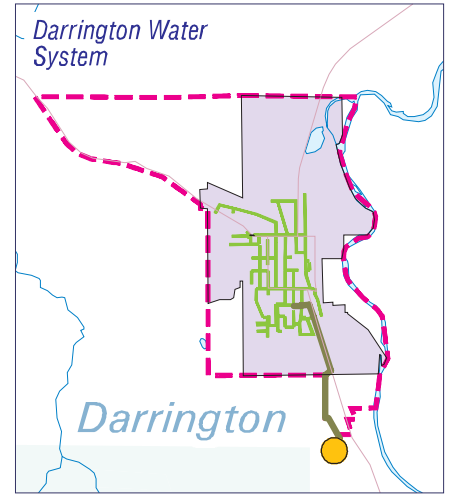
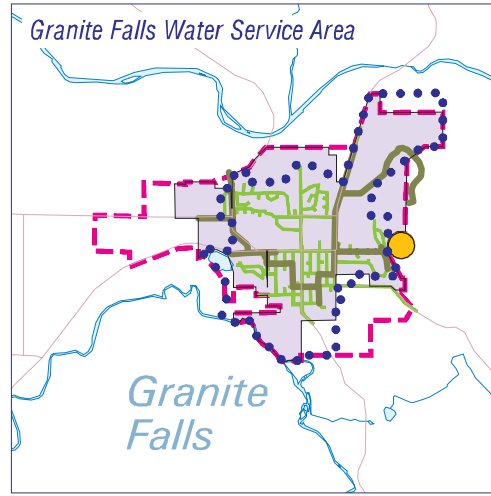
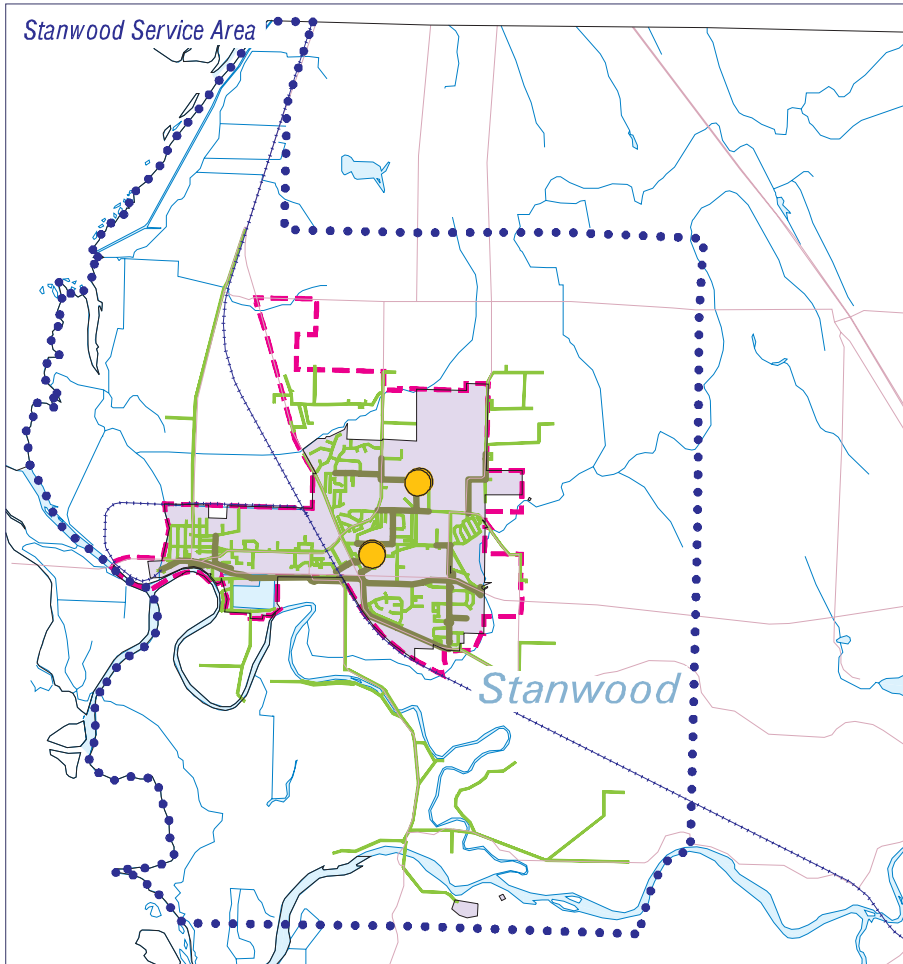




Snohomish County

Public Water Systems Serving UGAs

OTHER AREAS, SNOHOMISH COUNTY 12/2005



Snohomish County disclaims any warranty of merchantability or warranty of fitness of this map for any particular purpose, either express or implied. No representation or warranty is made concerning the accuracy, currency, completeness or quality of data depicted on this map.

Any user of this map assumes all responsibility for use thereof, and further agrees to hold Snohomish County harmless from and against any damage, loss, or liability arising from any use of this map.

Produced by Snohomish County Department of Planning and Development Services, Cartography/GIS Services, fl.a.

LEGEND

- Water Purification Plant
- Standpipe or Reservoir
- Well Locations (from Snohomish Co. Health District)
- Waterline diameter less than 10"
- Waterline diameter greater than or equal to 10" and less than 18"
- Waterline diameter greater than or equal to 18"
- Water District Boundary or City Water Service Area Boundary
- River
- Arterial Roadway
- Urban Growth Area Boundary
- Incorporated City Boundary
- Incorporated City Area



W:\plng\cap04\watoth_adapt.aml
 Water service data was generated from plans submitted by the water purveyors ranging from 1994 thru 2003 and has not undergone quality assurances or checks. Water Systems not serving Urban Growth Areas have yet to be compiled.