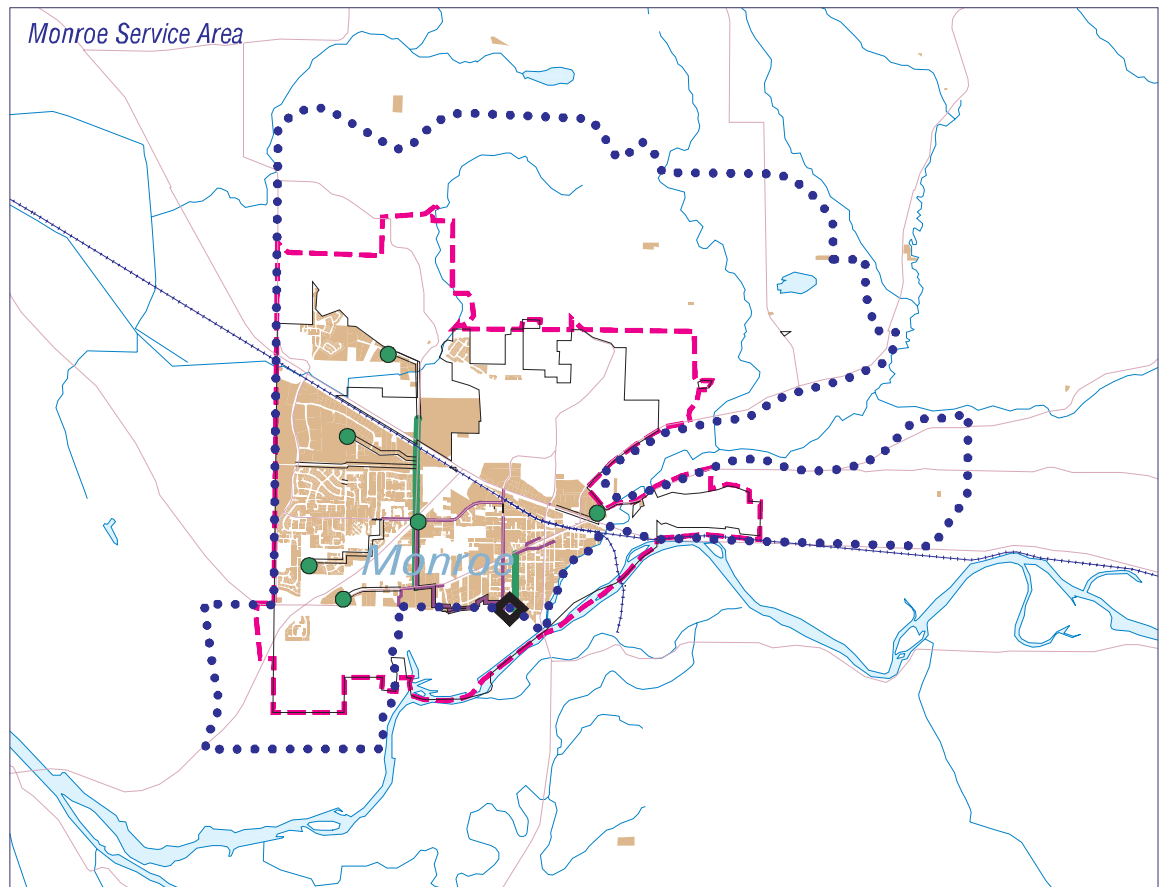
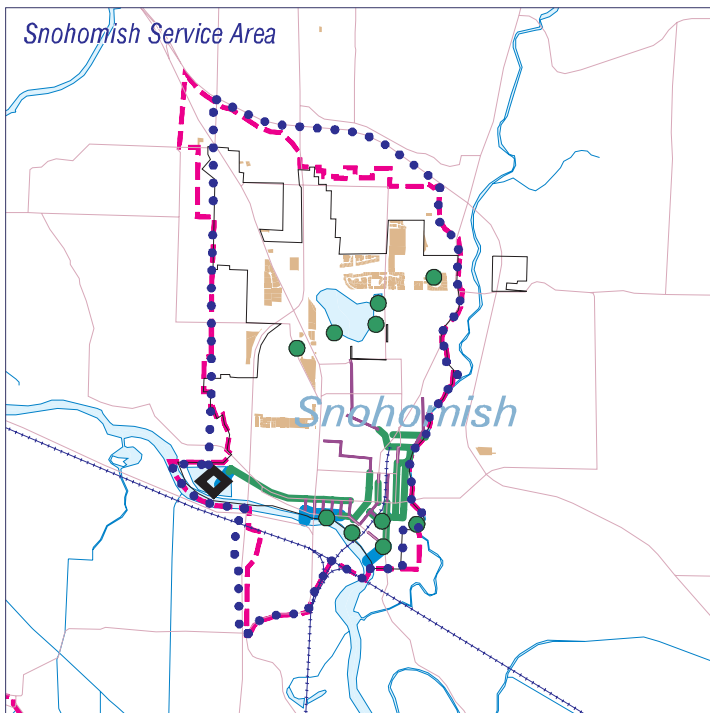
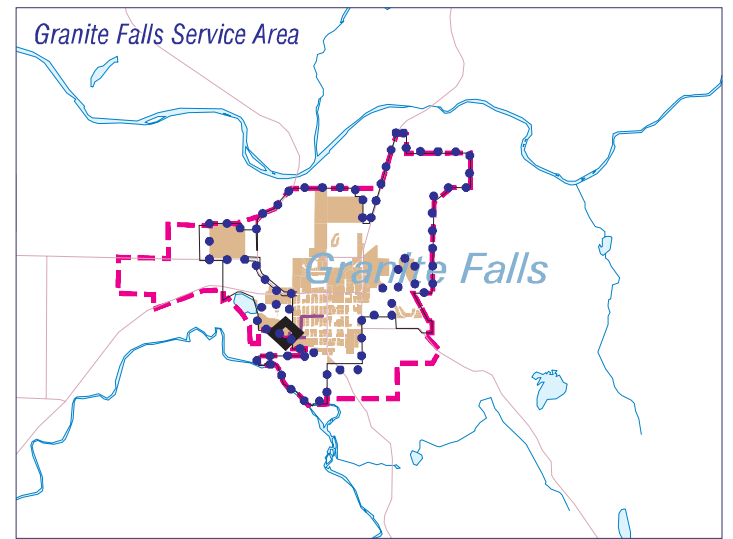
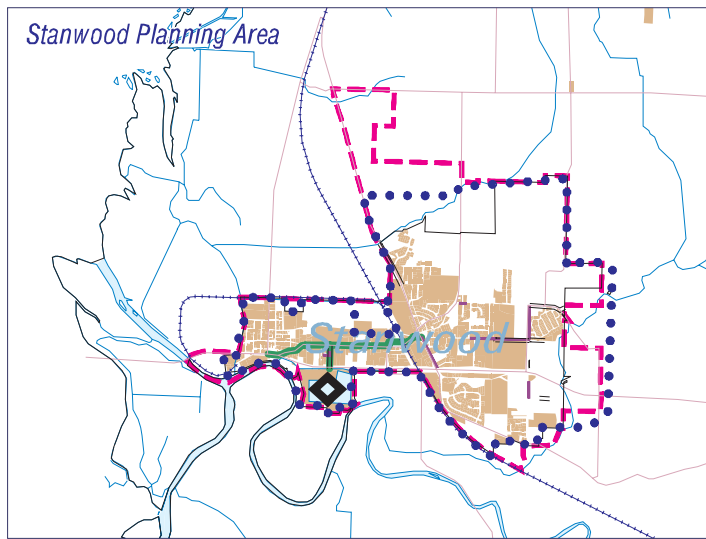




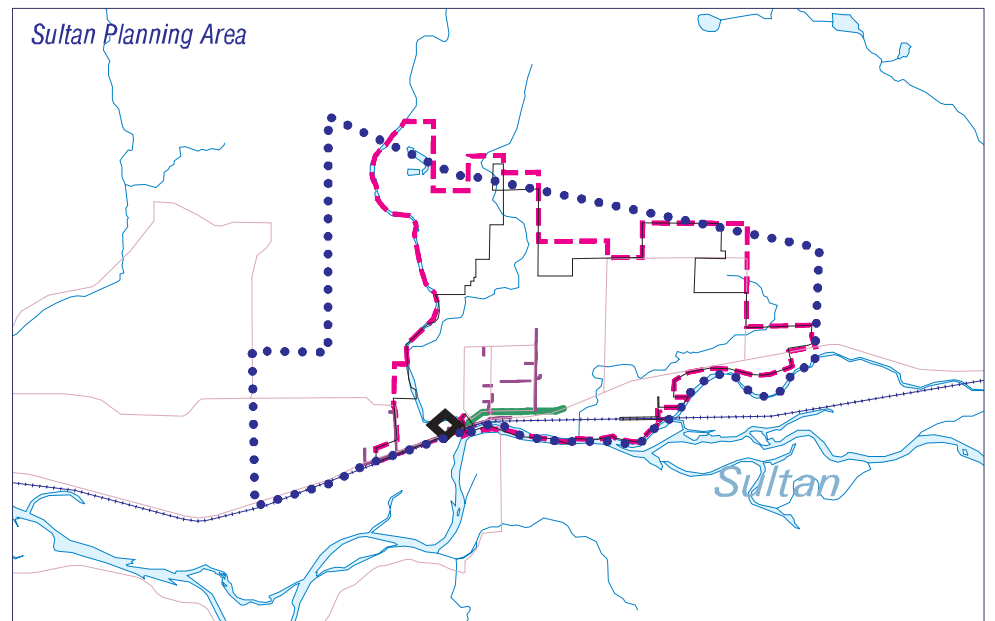
Public Waste Water Systems

OTHER AREAS, SNOHOMISH COUNTY 12/2005



LEGEND

- Parcels Served by Sanitary Sewers (Source: ILR)
- SEWER TRUNK LINES**
- Force Main
- Line Diameter greater than 8 Inches and less than or equal to 12 Inches
- Line Diameter greater than 12 Inches and less than or equal to 18 Inches
- Line Diameter greater than 18 Inches and less than or equal to 24 Inches
- Line Diameter greater than 24 Inches
- OTHER**
- River
- Arterial Roadway
- Urban Growth Boundary
- Sewer District Boundary or City Utility Planning Area
- Lift Stations
- Sewage Treatment Plants



*W:\p\ng\carto\cap04\sewothefp.aml
Sewered parcel data was generated by the Snohomish County Assessor Office as and extract from the PROVAL system in June 2000 and has not undergone quality assurances or checks.*

Any user of this map assumes all responsibility for use thereof, and further agrees to hold Snohomish County harmless from and against any damage, loss, or liability arising from any use of this map.

Produced by Snohomish County Department of Planning and Development Services, Cartography/GIS Services, fl.

Snohomish County disclaims any warranty of merchantability or warranty of fitness of this map for any particular purpose, either express or implied. No representation or warranty is made concerning the accuracy, currency, completeness or quality of data depicted on this map.