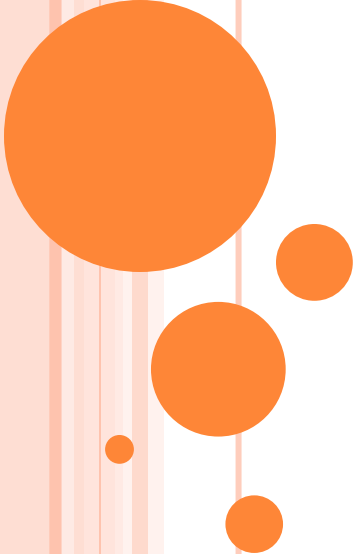


# SMITH ISLAND RESTORATION PROJECT UPDATE



Snohomish Basin Salmon Recovery Forum  
Presented Aug. 1, 2013  
By Debbie Terwilleger, Snohomish County

# SMITH ISLAND RESTORATION PROJECT

## OVERVIEW

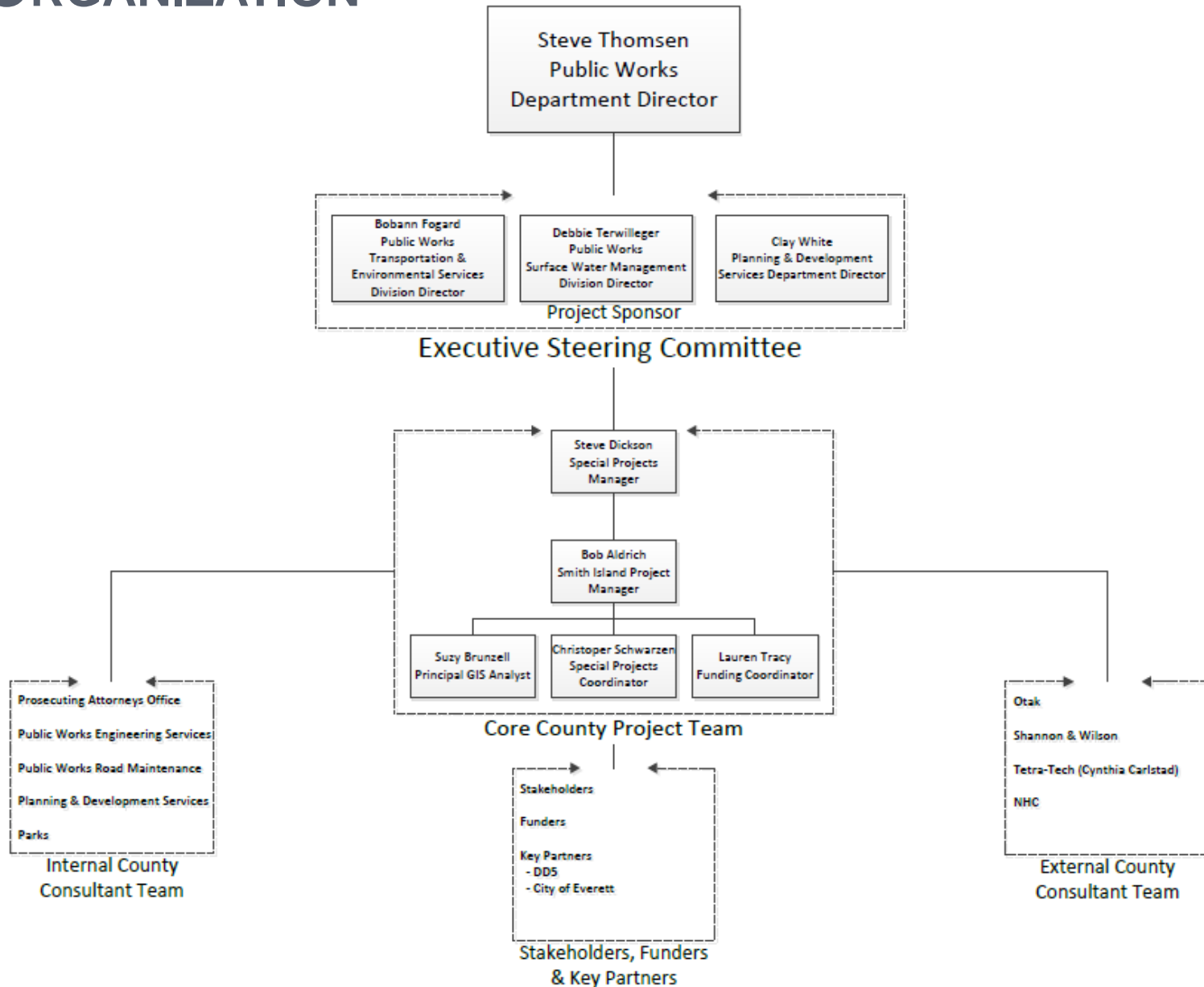


- One part of Snohomish County's Sustainable Lands Strategy, which balances fish with farms.
- Will restore historic tidal marshlands through construction of a new dike.
- Providing critical habitat for endangered Chinook salmon in the Snohomish River basin.
- Consists of about 400 acres of publicly and privately owned land located on the northeast portion of Smith Island.



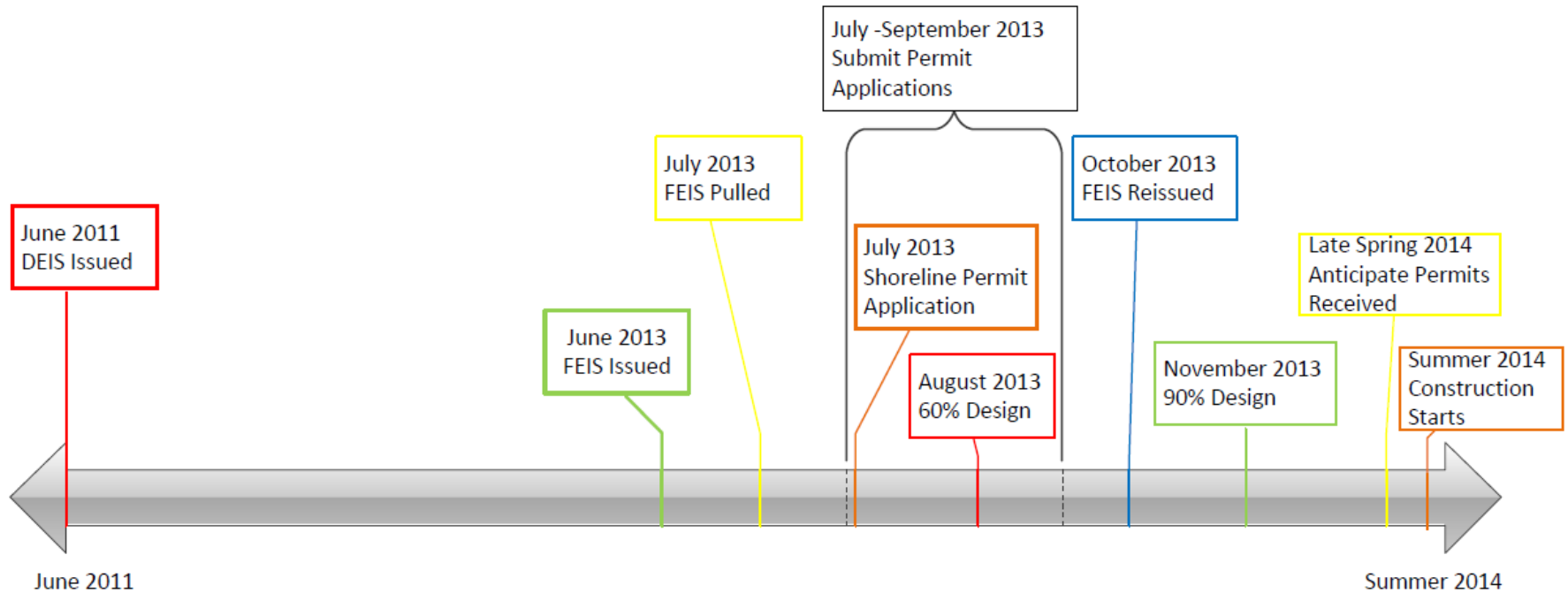
# SMITH ISLAND RESTORATION PROJECT

## ORGANIZATION



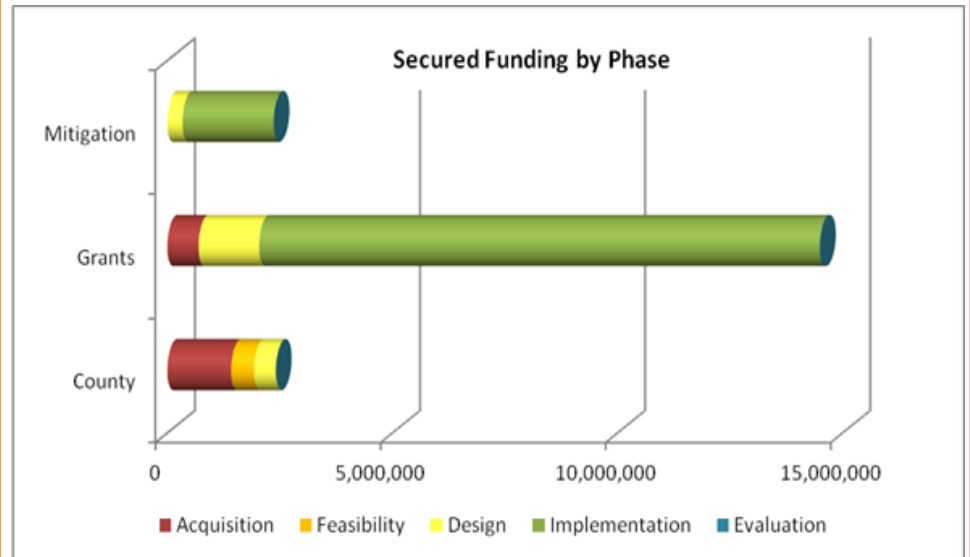
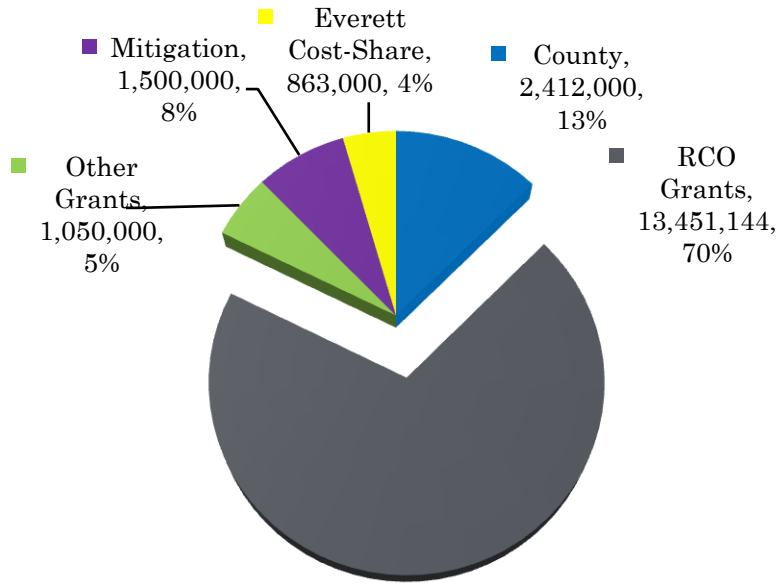
# SMITH ISLAND RESTORATION PROJECT

## TIMELINE



# SMITH ISLAND RESTORATION PROJECT

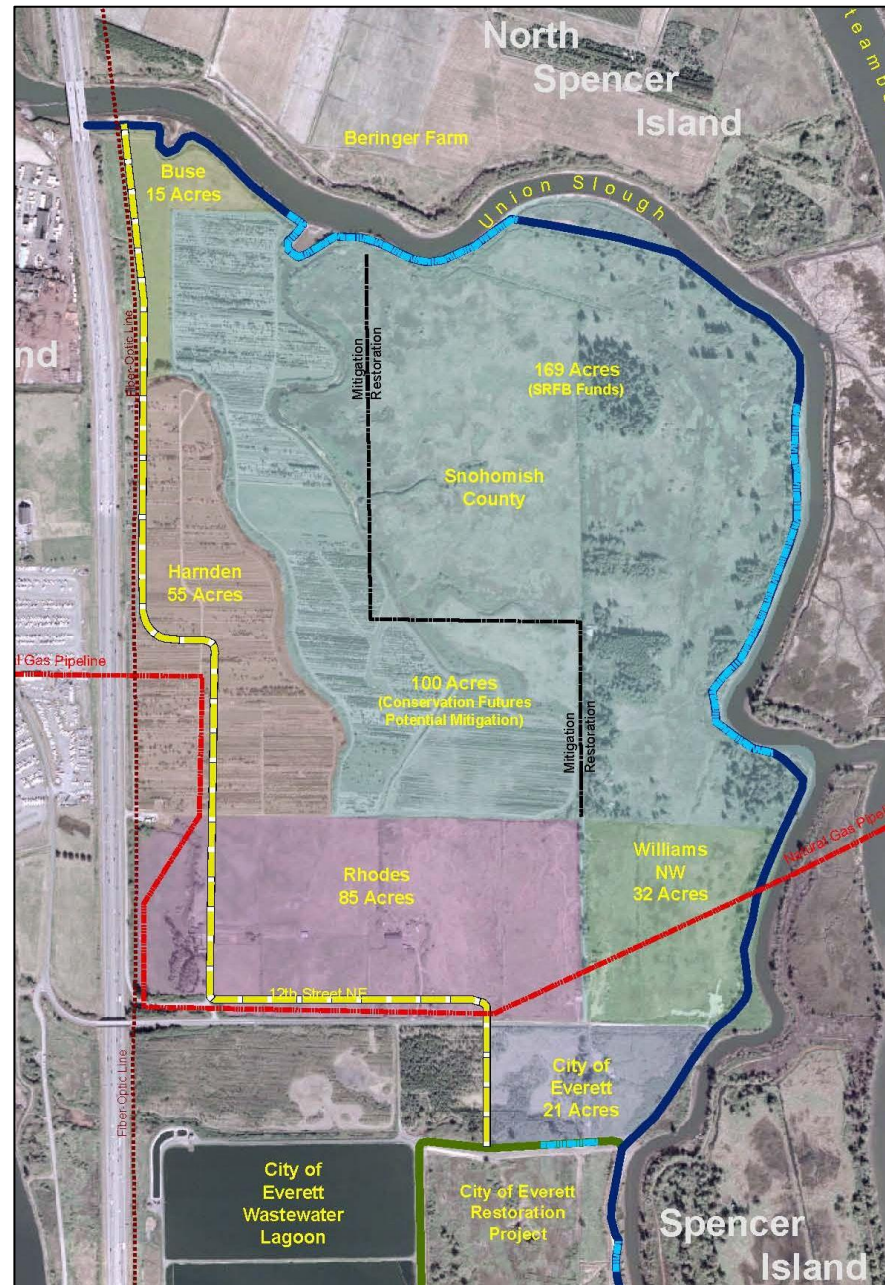
## FUNDING



# SMITH ISLAND RESTORATION PROJECT

## DESIGN SPECIFICS

- More blind tidal channels
- Better protection of PSE pipeline
- Coordination of breach with Blue Heron Slough
- Better distribution of water for fish



# SMITH ISLAND RESTORATION PROJECT

## COMMUNICATIONS

- Improved focus on communicating with stakeholders
- Created monthly newsletter for updates
- Redesigning Smith Island web pages
- Using social media to reach general public

