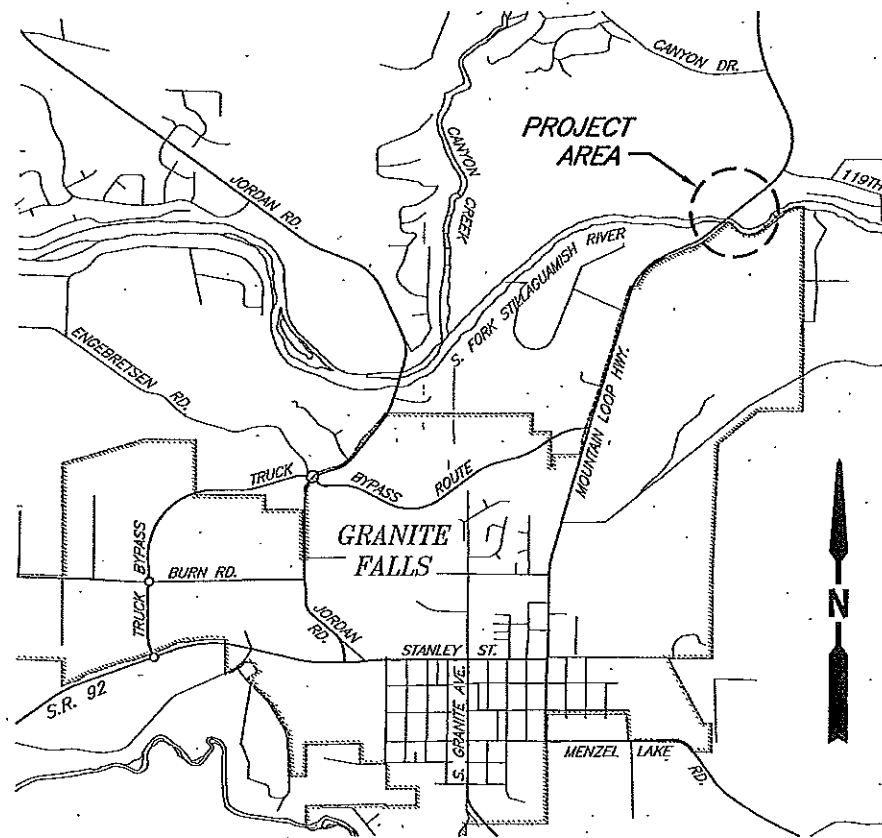


BRIDGE NO. 102 MOUNTAIN LOOP HWY CRP #1622, UPI 10-0011-1 RIGHT-OF-WAY PLAN

SHEET INDEX

SHEET NAME	REF SHT #	SHEET #
COVER	-	-
TOTAL PARCEL/SEC. SUB.	TP1	1
RIGHT-OF-WAY PLAN	RW1-RW2	2-3



VICINITY MAP
N.T.S.



Snohomish County Officials

DIRECTOR OF PUBLIC WORKS
STEVEN E. THOMSEN, P.E.

COUNTY ENGINEER
OWEN B. CARTER, P.E.

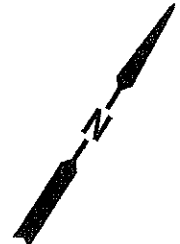
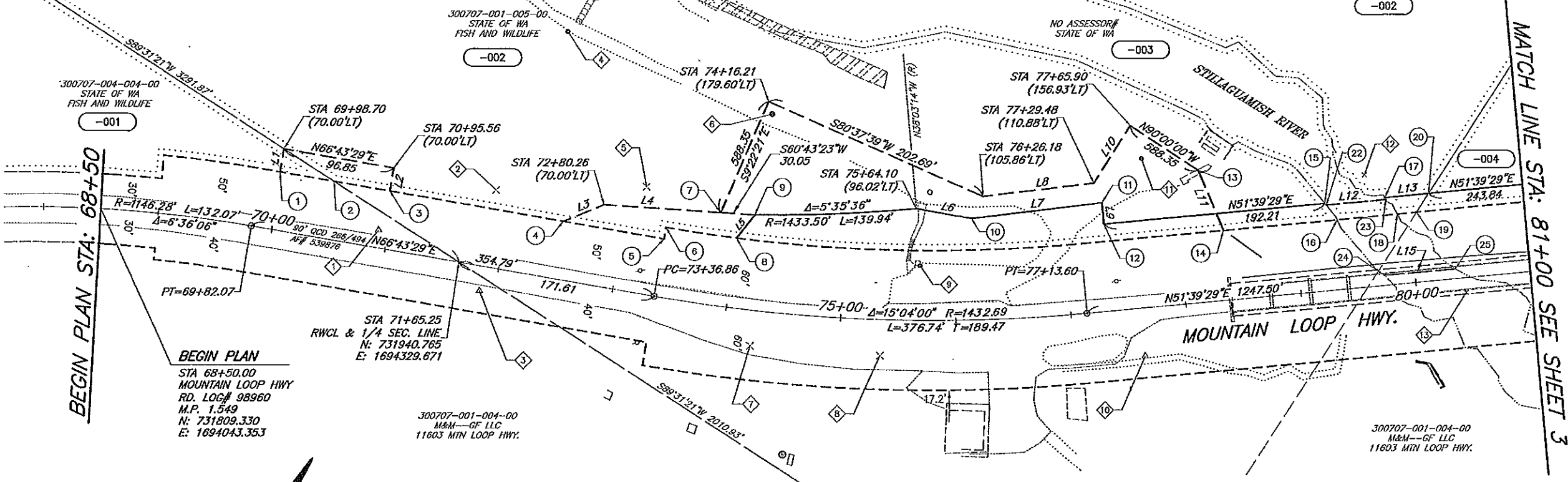
EXECUTIVE
JOHN LOVICK

COUNCIL MEMBERS
KEN KLEIN - DIST. 1
BRIAN SULLIVAN - DIST. 2
STEPHANIE WRIGHT - DIST. 3
TERRY RYAN - DIST. 4
DAVE SOMERS - DIST. 5

SECTION 7, T. 30 N., R. 7 E., W.M.

300625
4" SQUARE CONC.
POST W/ LEAD PLUG
& COPPER TACK
VISITED: 3/01/00
57/1129

300707-001-005-00
STATE OF WA
FISH AND WILDLIFE
-002



HORIZONTAL DATUM: PROJECT DATUM,
BASED ON CONVERTING STATE PLANE COORDINATES,
(WASHINGTON NORTH ZONE, NAD 83/91 ADJUSTMENT)
BY SCALING UP DRAWING AT BASE POINT O.O AND
USING A MULTIPLICATION FACTOR OF 1.000074230 AND
MOVING 100,000 METERS NORTH & 100,000 METERS EAST.
TO OBTAIN STATE PLANE GRID DISTANCES FROM PROJECT
DATUM DISTANCES, SHOWN, MULTIPLY BY THE PROJECT
COMBINED GRID FACTOR OF 0.99992578

3007605
1 1/2" IRON PIPE W/PLUG
& TACK, EXPOSED 1.7'
VISITED: 2/09/00, 35/1129
N: 731857.519
E: 1698340.531

LEGEND

- PROPOSED RIGHT-OF-WAY LINE
- - - EXIST RIGHT-OF-WAY USED LINE
- - - EXIST RIGHT-OF-WAY LINE
- - - PROPOSED EASEMENT LINE
- - - PROPERTY LINE
- - - OWNERSHIP SYMBOL
- - - EXIST RIGHT-OF-WAY CENTERLINE
- - - EXIST RIVER BANK
- EXIST EDGE OF PAVEMENT
- EXIST EDGE OF GRAVEL
- EXIST FENCE LINE
- EXIST EDGE OF CONC
- EXIST BUILDING LINE
- ⊗ FOUND 1/4 CORNER MON
- × SET MAG NAIL
- SET SPIKE
- △ SET HUB & TACK

ACQUISITION DOCUMENT (AUDITOR FILE NO.)	PARCEL #	NAME	AREA (sq. ft.)	R/W REQ'D	ESMT REQ'D	REMAINDER
98960-RC1108-004		STATE OF WASHINGTON FISH & WILDLIFE	462,349	3,747	0	458,602
98960-RC1108-003		STATE OF WASHINGTON	131,488	0	3,734	131,488
98960-RC1108-002		STATE OF WASHINGTON FISH & WILDLIFE	1,469,759	12,687	23,962	1,457,072
98960-RC1108-001		STATE OF WASHINGTON FISH & WILDLIFE	96,159	0	476	96,159

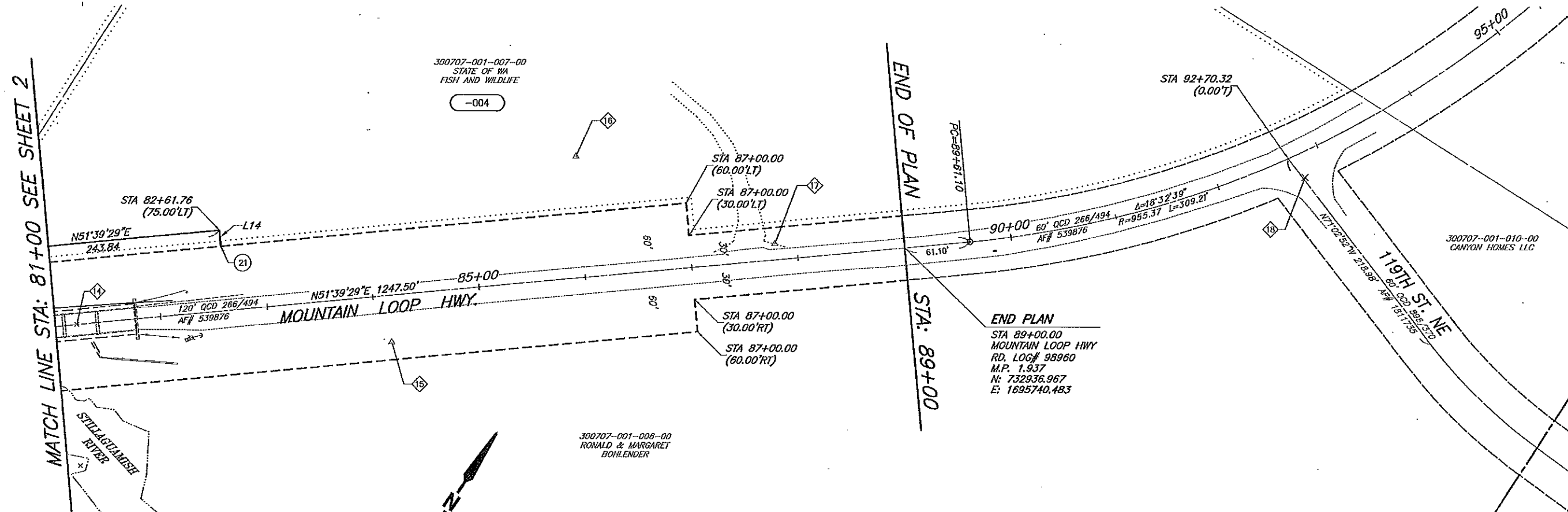
MONUMENT/CONTROL TABLE						
NO	STATION	OFFSET	NORTHING	EASTING	ELEV	DESCRIPTION
1	70+91.79	15.19' LT	731925.691	1694256.196	403.06	SET HUB & TACK, 112/1334
2	71+86.48	66.49' LT	732010.222	1694322.912	375.42	SET MAG NAIL, 102/1334
3	71+87.04	21.40' RT	731929.716	1694358.152	397.73	SET HUB & TACK, 43/1334
4	72+23.72	210.93' LT	732157.634	1694300.039	326.51	SET SPIKE, 101/1334
5	73+14.11	91.46' LT	732083.607	1694430.278	369.59	SET MAG NAIL, 091/1334
6	74+21.08	169.24' LT	732195.381	1694497.767	348.00	SET SPIKE, 091/1334
7	74+24.50	30.47' RT	732018.448	1694580.446	391.89	SET MAG NAIL, 052/1501
8	75+34.74	31.01' RT	732072.533	1694679.188	392.09	SET MAG NAIL, 051/1501
9	75+68.14	47.05' LT	732156.354	1694666.196	387.81	SET SPIKE, 752/1703
10	77+61.17	41.35' RT	732198.061	1694872.923	390.75	SET HUB & MAG NAIL, 053/1501
11	77+73.00	127.94' LT	732338.177	1694777.186	368.42	SET SPIKE, 082/1334
12	79+63.89	96.30' LT	732431.782	1694946.530	317.09	SET SCRIBED "x" 551-1334
13	80+42.98	12.67' RT	732395.374	1695076.160	387.17	SET SCRIBED "x" 172/1211

LINE TABLE		
NO.	DIRECTION	DISTANCE
L1	N23°16'31"W	20.00'
L2	S23°16'31"E	20.00'
L3	N35°04'46"E	38.12'
L4	S60°43'23"W	101.55'
L5	N5°53'29"E	25.62'
L6	N67°07'03"E	48.49'
L7	N50°09'02"E	114.16'
L8	S50°09'02"W	96.82'
L9	S38°20'31"E	18.37'
L10	S0°00'00"E	58.71'
L11	N55°59'51"W	56.10'
L12	N51°42'22"E	51.62'
L13	N51°39'29"E	38.42'
L15	S52°07'19"W	62.20'

PROPOSED RIGHT-OF-WAY BY STATION/OFFSET			
SYMBOL	ALIGNMENT	STATION (feet)	OFFSET (feet)
1	MOUNTAIN LOOP	69+98.70	50.00' LT
2	MOUNTAIN LOOP	70+46.29	50.00' LT
3	MOUNTAIN LOOP	70+95.56	50.00' LT
4	MOUNTAIN LOOP	72+47.81	50.00' LT
5	MOUNTAIN LOOP	73+36.86	50.00' LT
6	MOUNTAIN LOOP	73+36.86	60.00' LT
7	MOUNTAIN LOOP	73+83.88	79.89' LT
8	MOUNTAIN LOOP	74+01.38	60.00' LT
9	MOUNTAIN LOOP	74+15.68	81.72' LT
10	MOUNTAIN LOOP	76+15.04	87.19' LT
11	MOUNTAIN LOOP	77+35.23	93.37' LT
12	MOUNTAIN LOOP	77+35.23	75.00' LT
13	MOUNTAIN LOOP	78+20.86	113.46' LT
14	MOUNTAIN LOOP	78+37.88	60.00' LT
15	MOUNTAIN LOOP	79+27.44	75.00' LT
16	MOUNTAIN LOOP	79+36.92	60.00' LT
17	MOUNTAIN LOOP	79+79.49	75.00' LT
18	MOUNTAIN LOOP	79+88.97	60.00' LT
19	MOUNTAIN LOOP	80+06.02	60.00' LT
20	MOUNTAIN LOOP	80+17.92	75.00' LT
22	MOUNTAIN LOOP	79+28.51	73.44' LT
23	MOUNTAIN LOOP	79+80.13	73.40' LT
24	MOUNTAIN LOOP	79+73.00	8.76' LT
25	MOUNTAIN LOOP	80+35.19	8.25' LT

Last Saved By: spw11w Sep 22, 2014 -- 7:59am REGION NO. 10 STATE WASH. FED. AID PROJ. NO. SURVEY NO. 3740 DESIGNED BY: DRAWN BY: ALJ FIELD BOOK(S): UPI# 10-0011-1		REVIEWED AND APPROVED BY: OWEN B. CARTER, P.E. DATE 10/13/14 SNOHOMISH COUNTY ENGINEER MICHAEL E. McVEY, SR. DATE 10-8-14 RIGHT-OF-WAY ACQUISITION SUPERVISOR	SNOHOMISH COUNTY DEPARTMENT OF PUBLIC WORKS PROJECT NO. RC 1622	GRANITE FALLS BRIDGE 102 RIGHT OF WAY PLAN	REFERENCE SHEET NO. RW1 SHEET 2 OF 3 SHEETS
---	--	---	--	--	--

SECTION 7, T. 30 N., R. 7 E., W.M.



300707-001-007-00
STATE OF WA
FISH AND WILDLIFE
-004

300707-001-010-00
CANYON HOMES LLC

300707-001-006-00
RONALD & MARGARET
BOHLENDER



HORIZONTAL DATUM: PROJECT DATUM,
BASED ON CONVERTING STATE PLANE COORDINATES,
(WASHINGTON NORTH ZONE, NAD 83/91 ADJUSTMENT)
BY SCALING UP DRAWING AT BASE POINT 0,0 AND
USING A MULTIPLICATION FACTOR OF 1.000074230 AND
MOVING 100,000 METERS NORTH & 100,000 METERS EAST.

TO OBTAIN STATE PLANE GRID DISTANCES FROM PROJECT
DATUM DISTANCES, SHOWN, MULTIPLY BY THE PROJECT
COMBINED GRID FACTOR OF 0.99992578

LEGEND

- PROPOSED RIGHT-OF-WAY LINE
- - - EXIST RIGHT-OF-WAY USED LINE
- - - EXIST RIGHT-OF-WAY LINE
- - - PROPOSED EASEMENT LINE
- - - PROPERTY LINE
- - - OWNERSHIP SYMBOL
- - - EXIST RIGHT-OF-WAY CENTERLINE
- - - EXIST RIVER BANK
- EXIST EDGE OF PAVEMENT
- EXIST EDGE OF GRAVEL
- EXIST FENCE LINE
- EXIST EDGE OF CONC
- EXIST BUILDING LINE
- FOUND 1/4 CORNER MON
- × SET MAG NAIL
- SET SPIKE
- △ SET HUB & TACK

LINE TABLE

NO.	DIRECTION	DISTANCE
L14	N38°20'31"W	15.00'

PROPOSED RIGHT-OF-WAY BY STATION/OFFSET

SYM	ALIGNMENT	STATION (feet)	OFFSET (feet)
21	MOUNTAIN LOOP	82+61.76	60.00' LT

MONUMENT/CONTROL TABLE

NO	RIGHT-OF-WAY C/L		PROJECT COORDINATES		ELEV	DESCRIPTION
	STATION	OFFSET	NORTHING	EASTING		
14	81+20.60	0.10' LT	732453.541	1695129.118	367.24	SET SCRIBED "4" 312/1357
15	84+13.94	43.74' RT	732601.129	1695386.389	379.52	SET HUB & TACK, 651/1334
16	86+01.18	112.65' LT	732839.940	1695436.229	462.61	SET HUB & TACK, 511/1334
17	87+79.53	14.87' LT	732873.896	1695636.776	411.31	SET HUB & TACK, 522/1334
18	92+77.76	22.47' RT	733196.396	1696018.902	419.75	SET MAG NAIL, 12/1221

ACQUISITION DOCUMENT (AUDITOR FILE NO.)	PARCEL #	NAME	AREA (sq. ft.)	R/W REQ'D	ESMT REQ'D	REMAINDER
OWNERSHIPS						

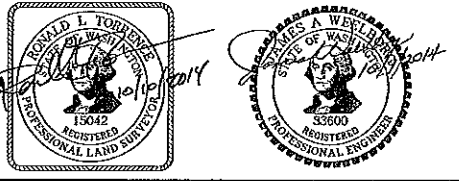
Last Saved By: spw1w Sep 22, 2014 -- 7:59am

REGION NO.	STATE	FED. AID PROJ. NO.	SURVEY NO.
10	WASH.		3740

DESIGNED BY: ALJ
DRAWN BY: ALJ

FIELD BOOK(S):
UPI# 10-0011-1

DATE	NO.	REVISION	CT	RW	CS	CE
------	-----	----------	----	----	----	----



REVIEWED AND APPROVED BY:
OWEN B. CARTER, P.E.
SNOHOMISH COUNTY ENGINEER
DATE: 10/12/14

Michael E. McVey, Sr.
MICHAEL E. McVEY, SR., P.E.
RIGHT-OF-WAY ACQUISITION SUPERVISOR
DATE: 10-8-14

SNOHOMISH COUNTY
DEPARTMENT OF
PUBLIC WORKS
PROJECT NO. RC 1622

GRANITE FALLS
BRIDGE 102
RIGHT OF WAY PLAN

REFERENCE SHEET NO. RW2
SHEET 3 OF 3 SHEETS