



Courthouse Project Update Meeting 05.23.19

MOUNT BAKER CONFERENCE ROOM | RJD

NEXT SCHEDULED MEETING 06.06.19

New and/or updated items indicated by bold italics

1. Schedule

a. Current Schedule Impacts

- **Winter Storm Impact** – Hoffman and the Project Team met 4/30 regarding Hoffman's request for a 24-day time extension to the schedule (24 calendar days, 16 working). The Project Team is now reviewing the additional supporting information provided by Hoffman.

b. Upcoming Activities – see also 5.a-5.b. and 6.a.-6.d.

Continue erecting structural steel for Addition, form and pour the south shear wall footing in the Tunnel, perform renovations in Courtrooms 2D and 3A, build out north side of the restroom core, form the decks and pour concrete for each level of the Addition (June through July), add fireproof coating to the Addition structural steel, rough in the Addition MEP (mechanical / electrical / plumbing) riser, begin installing wall tile in the existing Courthouse's future restroom core, install flooring in the Basement.

c. Progress to Date

Poured Addition slab-on-grade; poured concrete for Addition footings, north side shear walls, elevator pit slab, and Veterans' Memorial (1,300+ cubic yards in 17 pours); completed Memorial hardscape, monument relocation, and utilities; performed renovations in Courtroom 2C; installed acoustical ceilings in the Basement renovation areas; connected to new switchgear and transformer; excavated and installed micropiles for south shear wall.

2. Contract Metrics

- Hoffman given Notice To Proceed: 7/30/2018
- Phase 1 Projected Completion: 2/3/20
- Phase 2 Substantial Completion: 2/8/21**
 - Reflects seven-day non-compensable time extension to cover delays resulting from removal of contaminated soils and the remnants of the old County Detention Home.
- Original Project Budget (approved by Council 7/30/2018): \$76,579,770
 - Adjustment due to removal of art allowance: -\$441,417
 - Revised Project Budget: \$76,138,353
- Work Complete and Invoiced Through 3/31/19: \$21,659,357**

3. Changes

- Addition Canopy Footing** – Hoffman has informed the Project Team of a potential delay which could result from installing a canopy footing out of sequence.
 - There is no delay at this time. By contract, Hoffman is required to notify the County of any potential schedule impact.
 - Should a request for time extension be submitted, it will be subject to the same review and negotiation as previous requests.



- Hoffman intends to install the footing at the earliest opportunity but cannot be certain it will not affect the schedule's critical path.

4. Upcoming Project Decisions Needing Court Input

Due Date	Item
6/6/19	July Meeting Sequence July 4 is a Thursday. Under consideration: resuming the meeting series on 7/11 or waiting until the next scheduled instance on 7/18.

5. Stakeholder Concerns

- Courthouse Indoor Air Quality** – On 5/13, a Courthouse occupant reported an objectionable odor. A portable toilet cleaning truck had parked too close to the building's air intake plenum. Once the truck was identified as the source and moved away from the intake, the Courthouse ventilation system quickly cleared the odor. Follow-up air monitoring test results are negative for pollutants.
- Minimizing Noise Disruptions** – The Project Team will provide advance notice to Superior and District Courts regarding activities which may carry major noise impacts.
 - This includes the dates and locations of such activities as concrete pours, erecting steel, and connecting steel structural elements, all of which must continue in order to maintain schedule.
 - Per requests by Presiding Judge Weiss and Superior Court Administrator Shane Nybo, the Project Team will provide immediate notice of any changes in scheduled activities which are expected to generate significant noise.
- Phase 2 Office Moves / Alterations** – The Project Team is in weekly Phase 2 (2020-21) logistics discussions with Hoffman. As we confirm Hoffman's approach for each floor, we will resume meeting with building user groups throughout the Summer of 2019.

6. Announcements / Action Items

- Upcoming Addition Work**
 - Decks (floor by floor)** – As deck pour dates are confirmed by Hoffman, we will update this line item. Currently, the pours for Levels 2 to 5 are scheduled for 6/7, 6/14, 6/20, and 6/25.
 - Structural Steel (see Figure 1)** – Structural steel erection began 5/22 and is expected to take approximately two weeks.
 - Veterans Memorial Plaza** – Construction fencing will remain rerouted around the Memorial to accommodate public use.
- Current and Upcoming Courtroom Work (2019-20)** – Work in the following courtrooms will include patching ceilings; replacing carpet, HVAC boxes, pews, and jury chairs; and installing sprinkler piping and acoustic fabric panels.
 - 3A (District Court Department 2)** – ongoing as of April 1, currently undergoing demolition and abatement.
 - 2D (Superior Court Department 3)** – ongoing as of May 3.
 - 2E (Superior Court Department 4)** – August 18 to September 16.



- iv. 2B (Superior Court Department 1) – Crews will return to finalize upgrades, December 19 to January 5.
- c. **Early Phase 2 Courtroom and Chambers Work (2019)** – Work in these areas includes installation of structural elements, such as drag struts and collector plates.
 - i. **5A Courtroom (District Court Department 12)** – June 12 to June 25.
 - ii. **5C Courtroom and Chambers Area (Superior Court Department 9)** – July 20 to August 11.
 - iii. **5D Chambers Area (Superior Court Department 10 & 10.5)** – October 5 to October 27.
- d. **Early South Shear Wall Work** – Crews will resume building the base of the south shear wall in the Courthouse Tunnel in late May. The remainder of this shear wall, the portion above the Tunnel through Level 5, will be constructed in Phase 2.
- e. **Rosetta Stone (Figure 2)** – The Project Team uses the table in Figure 2 to align current and new courtroom numbers and the judges assigned to those rooms.
- f. **Topping Out Ceremony** – Date and time for this ceremony, where project stakeholders sign the last steel beam to be hoisted into place, will be announced once confirmed.
- g. Next CBRE Heery Site Visit – expected Autumn 2019 after work in Courtrooms 2C, 2D, and 2E has completed.

MEETING ATTENDANCE

	SUPERIOR COURT		DISTRICT COURT		EXECUTIVE’S OFFICE
X	Judge Bruce Weiss		Judge Anthony Howard	X	Ken Klein
	Judge Linda Krese		Judge Tam Bui		Josh Dugan
	Judge George Appel		Lauren Bjurstrom		
	Judge Millie Judge		Lonnie Enyeart		COUNCIL STAFF
	Commissioner Susan Gaer				Geoffrey Thomas
	Shane Nybo		SHERIFF’S OFFICE	X	Heidi Beazizo
X	Bob Terwilliger		Ty Trenary		
X	Andrew Somers		Jeff Brand		OFFICE for PUBLIC DEFENSE
			Sean Gillespie		Sara Bhagat
	CLERK’S OFFICE				Kristin Crane
	Sonya Kraski		PROSECUTING ATTORNEY		
	Mark Allen				INFORMATION TECHNOLOGY
	Shelia Postle				JD Braathen
			LAW LIBRARY	X	Kirk Copple
	FACILITIES & FLEET		Lettice Parker		
	Mark Thunberg				OAC SERVICES
X	Jeff Hencz		BAR ASSOCIATION	X	Kevin Fromm
X	Steve Slawson		Joyce Wood	X	Glen Lyons
X	Lolly Huggins				

Attendance: “X” denotes present for entire meeting, asterisk (*) denotes partial attendance.

Figure 1: First structural steel column erected for Addition.

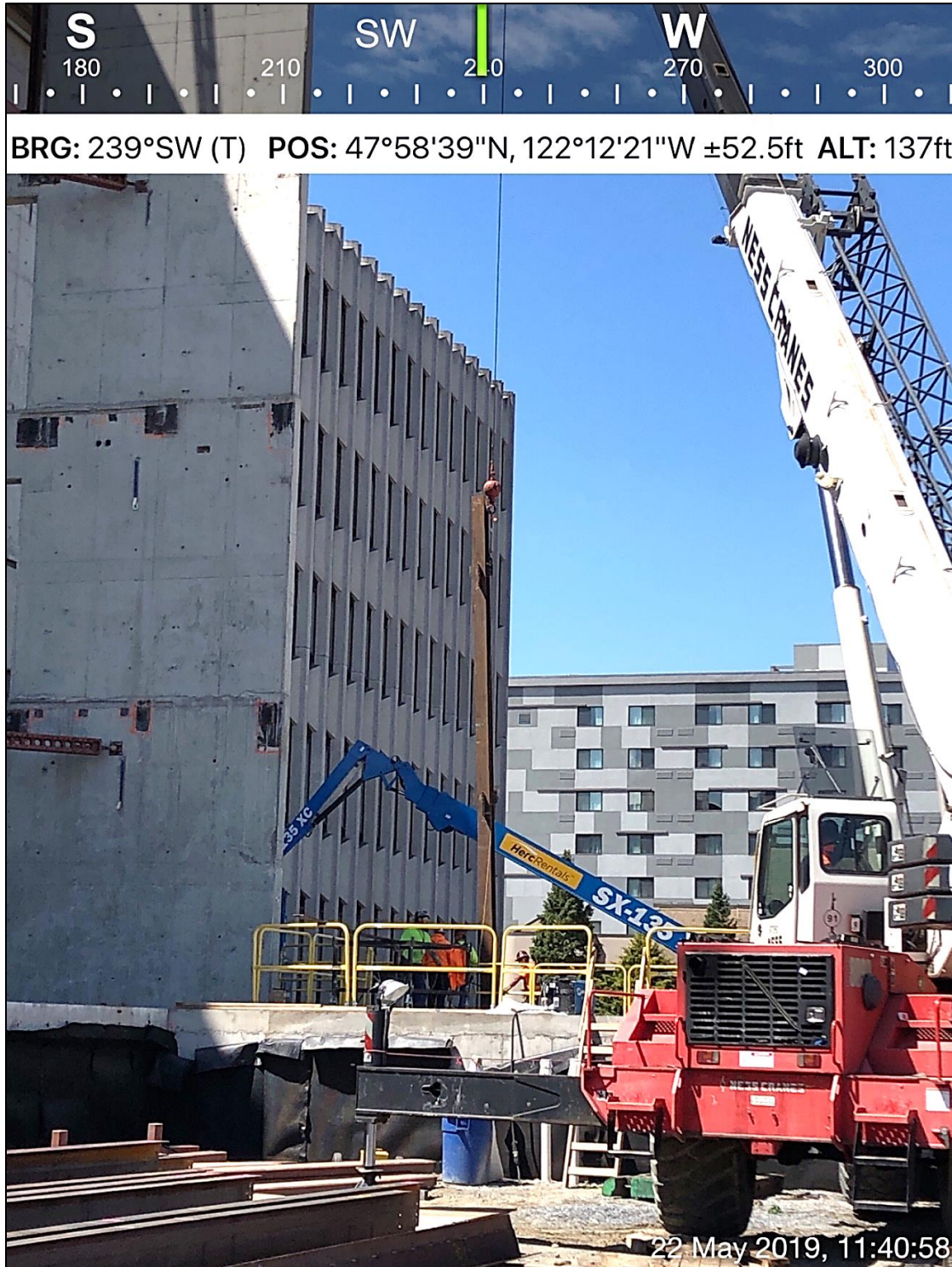




Figure 2: Courtroom Rosetta Stone.

COURTROOM DESIGNATIONS BY FLOOR AND BY JUDGE			
NEW	CURRENT	JUDGE	NOTES
5A	Superior Dept 12	Ellis	
5B	Superior Dept 11	Krese	
5C	Superior Dept 9	Farris	
5D	Superior Dept 10	Weiss	<i>current Presiding Judge</i>
4A	NEW	TBD	<i>old Kinard Conference Room</i>
3A	District Dept 2	Bui	
3B	District Dept 3	Howard	
3C	District Dept 1	<i>(District Hearings)</i>	<i>to be relocated from 1 (east side)</i>
3D	N/A	<i>(shell space)</i>	
3E	Superior Dept 7	Wilson	
3F	Superior Dept 8	Lucas	
2A	C201	Okoloko	<i>high-profile trial courtroom</i>
2B	Superior Dept 1	Thompson	<i>Judge Appel at DJJC</i>
2C	Superior Dept 2	Okrent	
2D	Superior Dept 3	Larsen	
2E	Superior Dept 4	Langbehn	<i>Judge Judge at DJJC</i>
1A	C304	<i>(Superior Court Criminal Hearings)</i>	<i>to be relocated from 3 (south side)</i>
NEW	CURRENT	COMMISSIONER	NOTES
1B	Commissioner A	Moriarty	
1C	Commissioner B	Waggoner	
1D	Commissioner C	Gaer	
1E	Commissioner D	Brudvik	

The new courtroom numbering scheme represents the renovation's wayfinding improvements.



Hoffman's most recent 6-week lookahead (5/21/19, first page)

ID	Activity Name	Sub	Dur	Start	Actual Start	Finish
Phase 1 - Addition, Existing Basement Remodel, RR Core				52	25-Apr-19 A	09-Jul-19
Phase 1 - New Addition				52	25-Apr-19 A	09-Jul-19
Phase 1 - North Shearwall				15	25-Apr-19 A	20-Jun-19
C1655	NSW - Repair Finishes at North Shearwall at Basement			15	25-Apr-19 A	20-Jun-19
Phase 1 - New Addition - Foundation & Structure				33	22-May-19	09-Jul-19
Phase 1 - New Addition - Foundation & Structure - SOG Down				8	04-Jun-19	13-Jun-19
C1762.3	Addition - FRP J-Line Spreads	IW		8	04-Jun-19*	13-Jun-19
C1766	Addition - FRP 19.1-Line Spreads	IW		8	04-Jun-19*	13-Jun-19
Phase 1 - New Addition - Foundation & Structure - Level 1				27	22-May-19	28-Jun-19
C1769	Addition - Erect Steel (Main Structure - Entire Addition Durations)	SK		10	22-May-19*	05-Jun-19
C1769.7	Addition - Pan Deck / Edge Form / Misc. (Entire Addition Durations)	IW		20	03-Jun-19	28-Jun-19
C1071	Addition - Monokote / Fireproof Structure L1	IT		5	10-Jun-19	14-Jun-19
Phase 1 - New Addition - Foundation & Structure - Level 2				14	03-Jun-19	20-Jun-19
C1773	Addition - FRP L1 / L2 Deck	IW		5	03-Jun-19	07-Jun-19
C1722	Addition - Electrical Sleeves / Inserts L1 / L2	VECA		5	03-Jun-19	07-Jun-19
C1968	Addition - Mechanical Sleeves / Inserts L1 / L2	HP		2	05-Jun-19	06-Jun-19
C2008	Addition - Layout / Preclip for Stud Framing Underside of L2	AP		6	07-Jun-19	14-Jun-19
C1603	Addition - Monokote / Fireproof Structure L1 / L2	IT		4	17-Jun-19	20-Jun-19
Phase 1 - New Addition - Foundation & Structure - Level 3				14	10-Jun-19	27-Jun-19
C1723	Addition - Electrical Sleeves / Inserts L3	VECA		4	10-Jun-19	13-Jun-19
C1777	Addition - FRP L3 Deck	IW		5	10-Jun-19	14-Jun-19
C1969	Addition - Mechanical Sleeves / Inserts L3	HP		2	12-Jun-19	13-Jun-19
C2009	Addition - Layout / Preclip for Stud Framing Underside of L3	AP		6	14-Jun-19	21-Jun-19
C1604	Addition - Monokote / Fireproof Structure L3	IT		4	24-Jun-19	27-Jun-19
Phase 1 - New Addition - Foundation & Structure - Level 4				13	17-Jun-19	03-Jul-19
C1781	Addition - FRP L4 Deck	IW		4	17-Jun-19	20-Jun-19
C1724	Addition - Electrical Sleeves / Inserts L4	VECA		4	17-Jun-19	20-Jun-19
C1970	Addition - Mechanical Sleeves / Inserts L4	HP		2	18-Jun-19	19-Jun-19
C2010	Addition - Layout / Preclip for Stud Framing Underside of L4	AP		6	20-Jun-19	27-Jun-19
C1605	Addition - Monokote / Fireproof Structure L4	IT		4	28-Jun-19	03-Jul-19
Phase 1 - New Addition - Foundation & Structure - Level 5				8	21-Jun-19	02-Jul-19
C1971	Addition - Mechanical Sleeves / Inserts L5	HP		2	21-Jun-19	24-Jun-19
C1785	Addition - FRP L5 Deck	IW		3	21-Jun-19	25-Jun-19
C1725	Addition - Electrical Sleeves / Inserts L5	VECA		3	21-Jun-19	25-Jun-19
C2011	Addition - Layout / Preclip for Stud Framing Underside of L5	AP		6	25-Jun-19	02-Jul-19
Phase 1 - New Addition - Foundation & Structure - Roof Level				5	02-Jul-19	09-Jul-19
C1976	Addition - Mechanical Sleeves / Inserts at Roof Deck	HP		2	02-Jul-19	03-Jul-19
C1789	Addition - FRP Roof Deck	IW		3	02-Jul-19	05-Jul-19
C1726	Addition - Electrical Sleeves / Inserts at Roof Deck	VECA		5	02-Jul-19	09-Jul-19
Phase 1 - New Addition - Interior Buildout & Fit-Up				20	10-Jun-19	08-Jul-19
C1796	Addition - MEPF Rough-In & Top Track (Early Opportunities to be Coordir			20	10-Jun-19	08-Jul-19
Phase 1 - New Addition - Site Finishes				5	16-May-19 A	22-May-19
C1623	Site - Re-Install Memorial at New Location	MM		5	16-May-19 A	22-May-19*
Phase 1 - Basement Level Renovation				40	06-May-19 A	01-Jul-19
C1615	Existing BL - Install / Test New Electrical Equipment	VECA		40	06-May-19 A	01-Jul-19
C1927	Existing BL - RI Electrical - Fire Pump	VECA		14	09-May-19 A	29-May-19
C1928	Existing BL - Flooring	D9		10	30-May-19	12-Jun-19



Hoffman's most recent 6-week lookahead (5/21/19, continued)

ID	Activity Name	Sub	Dur	Start	Actual Start	Finish
Phase 1 - New Restroom Core in Existing Building				34	21-May-19	09-Jul-19
Phase 1 - New Restroom Core - Level 1				30	28-May-19	09-Jul-19
C1987	New RR L1 - Frame Ceilings @ F-Line	AP		2	28-May-19*	29-May-19
C1357	New RR L1 - Complete Cover Inspections	HCC		1	30-May-19	30-May-19
C1358	New RR L1 - Hang GWB Walls	AP		5	31-May-19	06-Jun-19
C1360	New RR L1 - Install Hard Lid Ceiling	AP		4	10-Jun-19*	13-Jun-19
C1922	New RR L1 - Tape & Finish GWB	AP		3	14-Jun-19	18-Jun-19
C1361	New RR L1 - Paint	NWC		4	19-Jun-19	24-Jun-19
C1363	New RR L1 - Trim Out Mechanical	HP		3	25-Jun-19	27-Jun-19
C1364	New RR L1 - Trim Out Electrical	VECA		3	25-Jun-19	27-Jun-19
C1365	New RR L1 - Trim Out Fire Sprinklers	HP		3	25-Jun-19	27-Jun-19
C1366	New RR L1 - Install Flooring & Base	D9		5	25-Jun-19	01-Jul-19
C1362	New RR L1 - Install Wall Tile	D9		5	02-Jul-19	09-Jul-19
Phase 1 - New Restroom Core - Level 2				26	30-May-19	05-Jul-19
C1936	New RR L2 - Frame Furred Wall @ F-Line	AP		2	30-May-19*	31-May-19
C1940	New RR L2 - RI Plumbing @ F-Line	HP		2	03-Jun-19	04-Jun-19
C1938	New RR L2 - RI Electrical @ F-Line	VECA		2	05-Jun-19	06-Jun-19
C1990	New RR L2 - OH RI MEP @ F-Line	HP		7	05-Jun-19	13-Jun-19
C1991	New RR L2 - Frame Ceilings @ F-Line	AP		2	14-Jun-19	17-Jun-19
C1382	New RR L2 - Complete Cover Inspections	HCC		1	18-Jun-19	18-Jun-19
C1385	New RR L2 - Install Hard Lid Ceiling	AP		4	19-Jun-19	24-Jun-19
C1383	New RR L2 - Hang GWB Walls	AP		5	19-Jun-19	25-Jun-19
C1934	New RR L2 - Tape & Finish GWB	AP		3	26-Jun-19	28-Jun-19
C1386	New RR L2 - Paint	NWC		4	01-Jul-19	05-Jul-19
Phase 1 - New Restroom Core - Level 3				31	21-May-19	03-Jul-19
C1947	New RR L3 - RI Plumbing @ F-Line	HP		2	21-May-19*	22-May-19
C1945	New RR L3 - RI Electrical @ F-Line	VECA		2	23-May-19	24-May-19
C1992	New RR L3 - OH RI MEP @ F-Line	HP		2	23-May-19	24-May-19
C1993	New RR L3 - Frame Ceilings @ F-Line	AP		2	28-May-19	29-May-19
C1407	New RR L3 - Complete Cover Inspections	HCC		1	30-May-19	30-May-19
C1410	New RR L3 - Install Hard Lid Ceiling	AP		4	31-May-19	05-Jun-19
C1408	New RR L3 - Hang GWB Walls	AP		5	24-Jun-19	28-Jun-19
C1941	New RR L3 - Tape & Finish GWB	AP		3	01-Jul-19	03-Jul-19
Phase 1 - New Restroom Core - Level 4				33	21-May-19	08-Jul-19
C1950	New RR L4 - Frame Furred Wall @ F-Line	AP		2	21-May-19*	22-May-19
C1954	New RR L4 - RI Plumbing @ F-Line	HP		2	23-May-19	24-May-19
C1952	New RR L4 - RI Electrical @ F-Line	VECA		2	28-May-19	29-May-19
C1994	New RR L4 - OH RI MEP @ F-Line	HP		2	28-May-19	29-May-19
C1995	New RR L4 - Frame Ceilings @ F-Line	AP		2	30-May-19	31-May-19
C1432	New RR L4 - Complete Cover Inspections	HCC		1	03-Jun-19	03-Jun-19
C1435	New RR L4 - Install Hard Lid Ceiling	AP		4	04-Jun-19	07-Jun-19
C1433	New RR L4 - Hang GWB Walls	AP		5	01-Jul-19	08-Jul-19
Phase 1 - New Restroom Core - Level 5				30	22-May-19	03-Jul-19
C1957	New RR L5 - Frame Furred Wall @ F-Line	AP		2	22-May-19*	23-May-19
C1961	New RR L5 - RI Plumbing @ F-Line	HP		2	24-May-19	28-May-19
C1959	New RR L5 - RI Electrical @ F-Line	VECA		2	29-May-19	30-May-19
C1996	New RR L5 - OH RI MEP @ F-Line	HP		2	29-May-19	30-May-19
C1997	New RR L5 - Frame Ceilings @ F-Line	AP		2	31-May-19	03-Jun-19



Hoffman's most recent 6-week lookahead (5/21/19, continued)

ID	Activity Name	Sub	Dur	Start	Actual Start	Finish
C1457	New RR L5 - Complete Cover Inspections	HCC		1	04-Jun-19	04-Jun-19
C1460	New RR L5 - Install Hard Lid Ceiling	AP		4	05-Jun-19	10-Jun-19
C1955	New RR L5 - Tape & Finish GWB	AP		3	11-Jun-19	13-Jun-19
C1461	New RR L5 - Paint	NWC		4	14-Jun-19	19-Jun-19
C1463	New RR L5 - Trim Out Mechanical	HP		3	20-Jun-19	24-Jun-19
C1464	New RR L5 - Trim Out Electrical	VECA		3	20-Jun-19	24-Jun-19
C1465	New RR L5 - Trim Out Fire Sprinklers	HP		3	20-Jun-19	24-Jun-19
C1466	New RR L5 - Install Flooring & Base	D9		5	20-Jun-19	26-Jun-19
C1462	New RR L5 - Install Wall Tile	D9		5	27-Jun-19	03-Jul-19
Phase 2 - Existing Courthouse Renovation				66	01-Apr-19 A	02-Jul-19
Phase 2 - South Shearwall				5	03-Jun-19	07-Jun-19
C1984	SSW - FRP Shearwall Footing	IW		5	03-Jun-19*	07-Jun-19
Phase 2 - Trial Courtroom Renovations				66	01-Apr-19 A	02-Jul-19
Phase 2 - Courtroom 2D				7	22-May-19	31-May-19
C2005	Courtroom 2D - Paint	NWC		3	22-May-19	24-May-19
C2007	Courtroom 2D - Hang Acoustical Panels	ARCH		1	23-May-19	23-May-19
C1682	Courtroom 2D - Install Flooring & Base	D9		2	23-May-19*	24-May-19
C2006	Courtroom 2D - Install Sprinklers	IT		3	23-May-19	28-May-19
C1683	Courtroom 2D - Re-Install Courtroom Furniture	HCC		2	28-May-19	29-May-19
C1684	Courtroom 2D - Final Clean & Punchlist	HCC		1	30-May-19	30-May-19
C1685	Courtroom 2D - Punchlist Corrections	HCC		1	31-May-19	31-May-19
C1686	Courtroom 2D - Construction Complete	HCC		0		31-May-19
Phase 2 - Courtroom 3A				66	01-Apr-19 A	02-Jul-19
C1697	Courtroom 3A - Demo / Abate	AP		20	01-Apr-19 A	24-May-19
C2001	Courtroom 3A - Install 19.1 Line Drag Strut	SK		5	28-May-19	03-Jun-19
C1731	Courtroom 3A - Fire Proofing	IT		3	04-Jun-19	06-Jun-19
C2012	Courtroom 3A - Install Sprinklers	IT		3	07-Jun-19	11-Jun-19
C1698	Courtroom 3A - RI Overhead Mechanical	HP		5	07-Jun-19	13-Jun-19
C1699	Courtroom 3A - RI Overhead Electrical	VECA		5	07-Jun-19	13-Jun-19
C1700	Courtroom 3A - Complete Cover Inspections	HCC		0		13-Jun-19
C1701	Courtroom 3A - Install Ceiling & Fixtures			10	14-Jun-19	27-Jun-19
C1702	Courtroom 3A - Install Flooring & Base	D9		5	26-Jun-19	02-Jul-19