

Two alignments south of 192nd Street SE emerged as potentially viable (an East Alignment and a West Alignment). Additional analysis of the East and West Alignments was completed in preparation for public meetings in March 2011.

March 2011 Public Meetings

During the March 2011 meetings, exhibits of one alignment north of 192nd Street SE and the two potential alignments south of 192nd Street SE were presented, along with pros and cons for the two alignments to the south. The meeting exhibits were also posted on the project Web page and citizens were asked to comment.

During 2010 and 2011, many citizen comments were received. Although there were positive comments about both East and West Alternative alignments, there was strong opposition to a trail through one of the neighborhoods along the East Alignment. The West Alignment was overall more favored by citizens, and meets the County's goal of providing a WSDOT standard 12-foot wide trail, while also minimizing user interaction with vehicles.

Alignment options were evaluated for:

- safety
- construction costs
- visibility
- type of construction
- user experience
- neighborhood compatibility
- sensitive area (environmental) impacts
- right-of-way impacts
- public acceptance

PRSRRT STD
US Postage
PAID
Everett, WA
Permit No. 120

► What's Next?

- **November 16, 2011 Open House.**
- Final alignment of the north section will be selected (early 2012).
- Design of the entire trail will proceed (between 183rd Street SE and 208th Street SE).
- Right-of-way plan will be prepared. (Includes the footprint of the future trail and the right-of-way that will be needed to complete it.)
- SEPA permitting process (State Environmental Policy Act); see project Web page for link to information about the SEPA process.
- Right-of-way plan presented to the Snohomish County Council for approval (mid-2012).
- Properties will be appraised.
- Property owners will be contacted by right-of-way agents sometime after August 2012. The "Before We Build" brochure explains the right-of-way purchase process (available from Public Works and the project Web page).
- Right-of-way purchase process (2012-2014).

Snohomish County is currently seeking funding for construction of the trail, which will likely take place in phases.

North Creek Regional Trail
Open House Nov. 16

Aaron Reardon, County Executive
Everett, WA 98201
3000 Rockefeller Ave., M/S 607
TES-Communications

Public Works
Snohomish County



Open House

Please join us to learn about options for the north section of the trail and the recommended West Alignment.

Arrive anytime between
6:00 and 7:30 p.m.

Wednesday
November 16, 2011
Lynnwood High School
18218 North Road

Interpreter services for non-English speakers and accommodations for persons with disabilities are available upon request. Please make arrangements in advance by calling Tina Hokanson, 425-388-3789. Hearing/speech impaired call 711.

Help Us Keep You Informed

1. Visit www.snoco.org and search "North Creek Trail."
2. Register on the project page to receive e-mail notices when information is updated.
3. E-mail questions and comments to transportation@snoco.org.
4. Call Tina Hokanson at 425-388-3789.

*This paper is recycled & recyclable.
October 2011 (D)*

North Creek Regional Trail

In late 2009 Snohomish County began Phase I of its plan to build a section of North Creek Trail between Filbert Road and North Creek Park (183rd Street SE) west of the Bothell-Everett Highway. The trail will be part of a coordinated regional system that will eventually connect the Sammamish River/Burke-Gillman Trail in King County with the Snohomish County Regional Interurban Trail in Everett.

Phase I of the project consists of identifying a preferred alternative and purchasing the necessary right-of-way, which is expected to be completed before the end of 2014. Funds for Phase I, including the purchase of land for the trail, were provided by King County in accordance with the mitigation agreement for the Brightwater treatment facility located in south Snohomish County. We are currently seeking funding for construction of the trail.

► Join Us At A November 2011 Meeting

On November 16, Snohomish County will hold an open house meeting to show alternatives for the north section of the trail and the recommended West Alignment for the section of the trail south of 192nd Street SE (see maps inside).

In response to additional citizen comments, the County has identified two additional alternatives for the section of trail between 192nd Street SE and 183rd Street SE. The three alternatives, along with their pros and cons, will be on display at the November 2011 meeting. Comments from citizens will be used to select the final alignment north of 192nd Street SE.

The West Alignment south of 192nd Street SE will provide the opportunity for a trail that meets WSDOT's standard of 12 feet in width for a multi-use pedestrian trail and will provide a unique opportunity to experience a natural environment in the middle of an urban area. As Snohomish County continues to develop in the future, opportunities to create these types of regional trails will be more difficult.

It is the objective of the County to provide a trail that meets the WSDOT standard of 12-foot widths where feasible and separated from traffic as much as possible.

► How Did We Get Here?

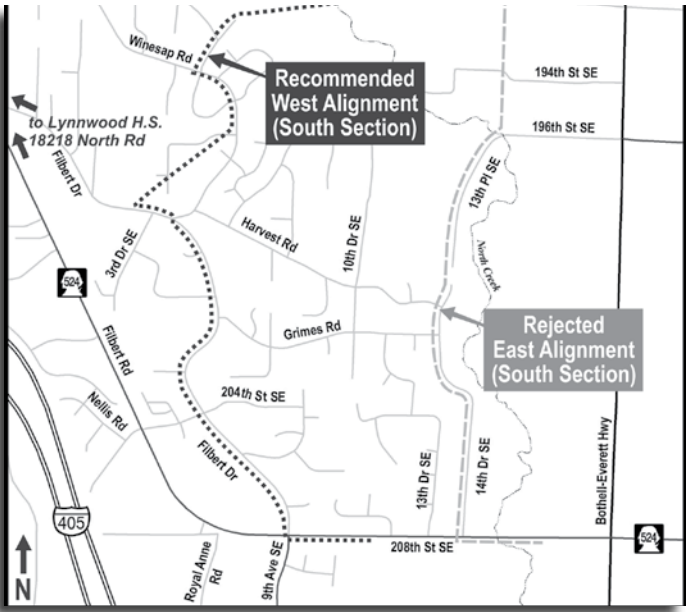
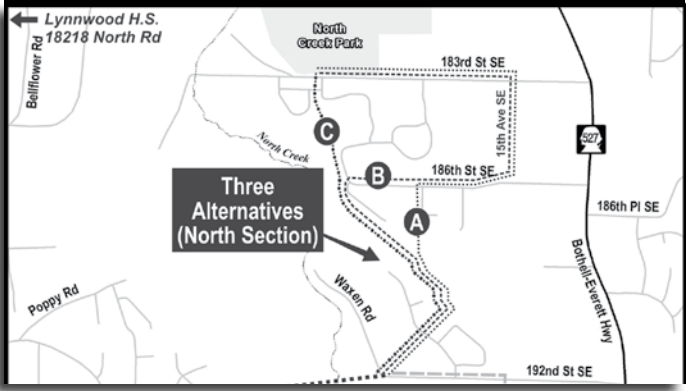
June 2010 Public Meetings

Snohomish County held three open house meetings in June 2010 to introduce a variety of options for a trail alignment that had emerged from a preliminary study of the area between Filbert Road and North Creek Park. Invitations were mailed to 4,500 homes. Approximately 90 citizens participated in this first round of meetings and provided comments that helped in the analysis of the alternative alignments.

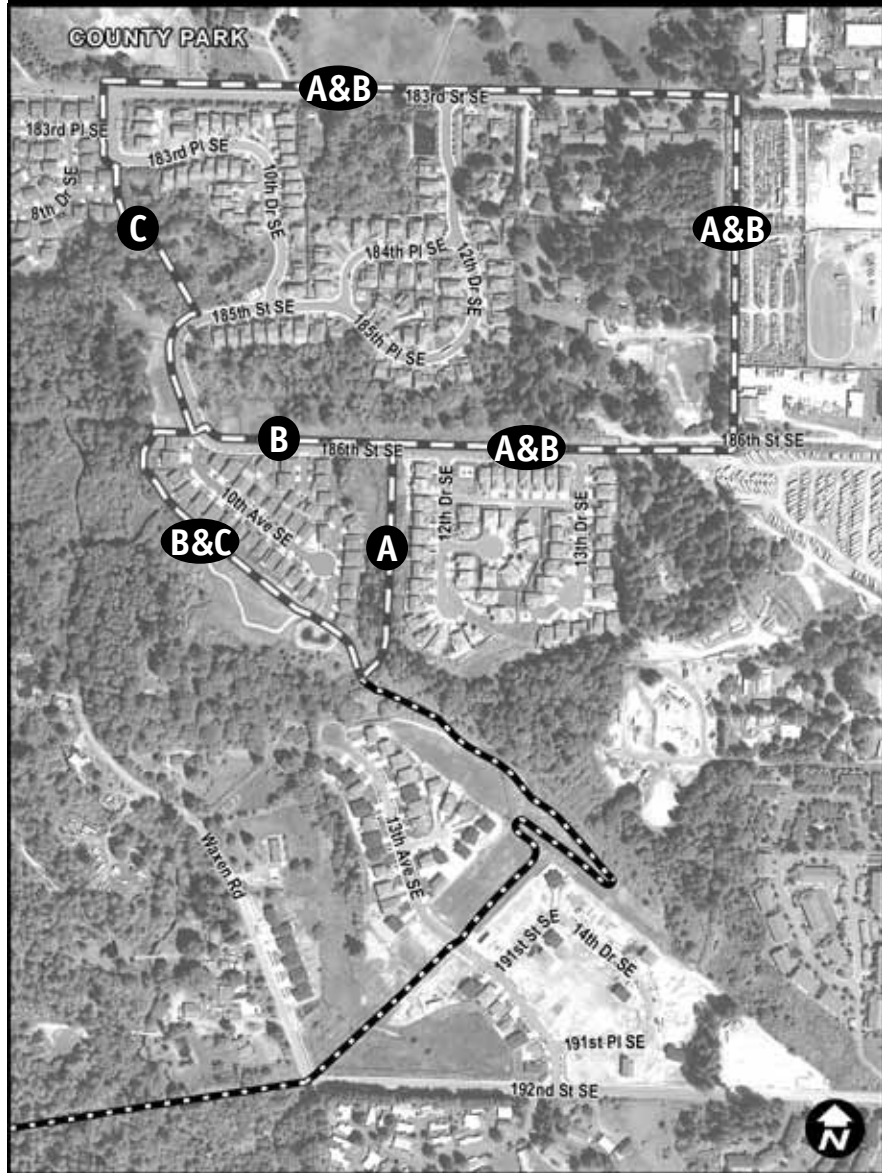
Analysis of the Alternatives

Following the public meetings in June 2010, the alternative alignments for the trail were evaluated using citizen comments and additional field work. From the analysis, one alignment was brought forward as the preferred alignment for the section of the trail north of 192nd Street SE. *(continued on back page)*

Overview Map - North Section and South Section

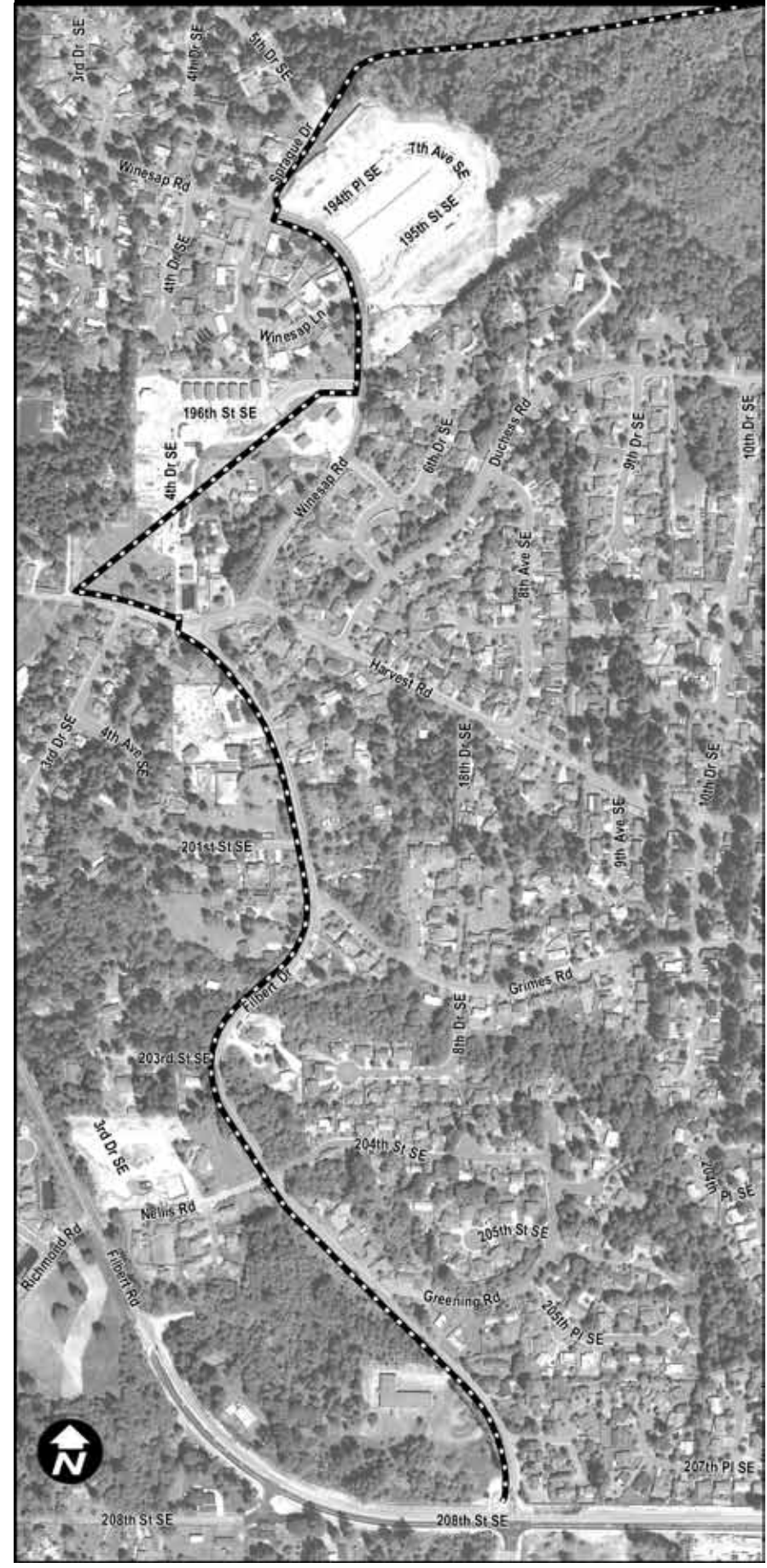


Map 1. Three Alternatives - North Section



(continued on Map 2)
 - - - - - Three alternatives
 - - - - - Recommended alignment for rest of trail

Map 2. Preferred West Alignment - South Section



Example of trail through wooded area



Example of boardwalk through wetland area



Example of trail along the road



Join us at the Wednesday November 16 Open House to learn more about the proposed trail.