

2018 SRFB Grant Round



SNOHOMISH BASIN SALMON RECOVERY FORUM

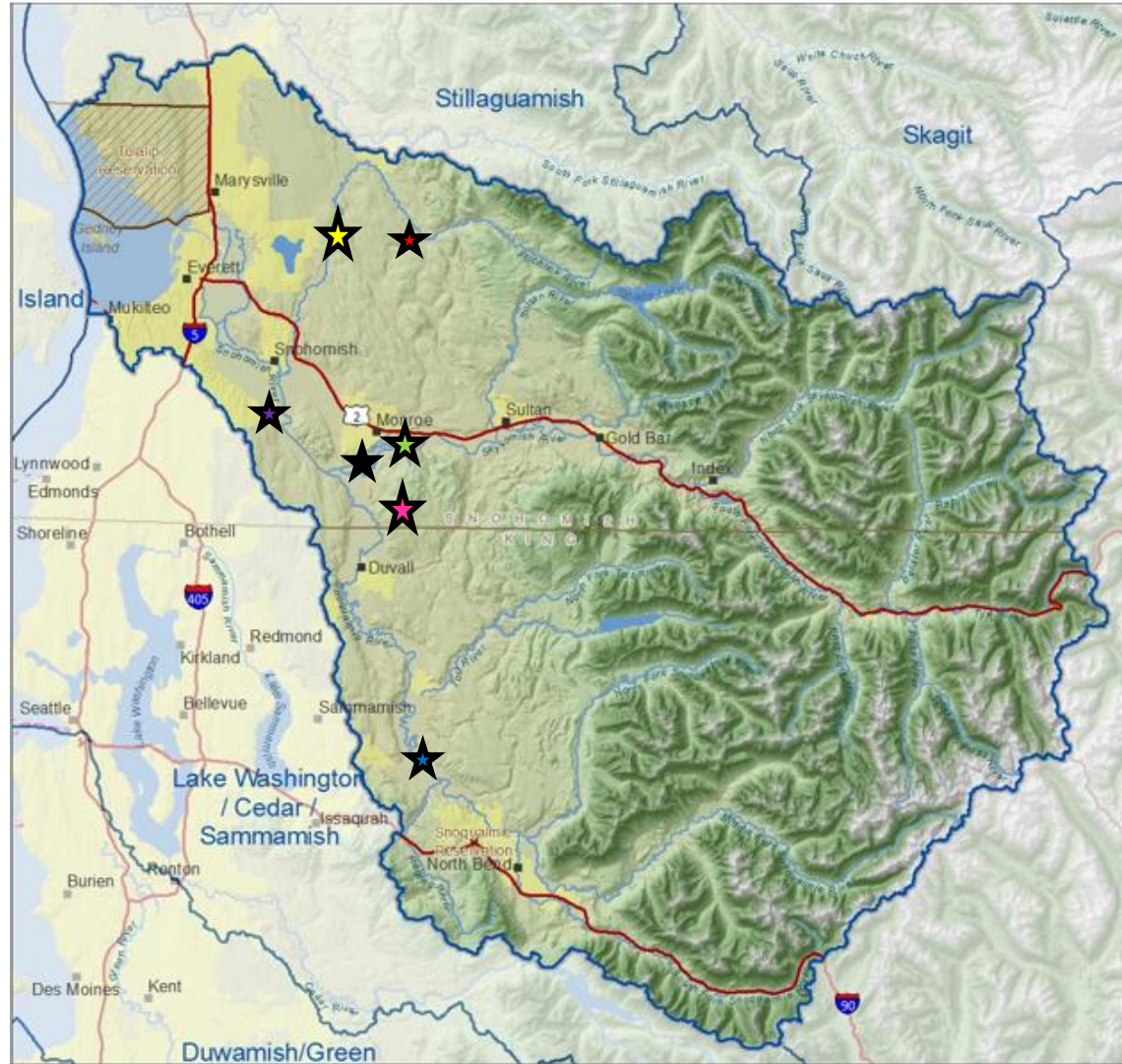
DATES TO REMEMBER:

- August 2, 2018
 - Forum produces ranked list
- August 9, 2018
 - Sponsors finalize and submit applications in PRISM by 5:00 PM
- September 18-20, SRFB Review Panel Meeting
 - Determination of project status
- October 11, 2018
 - Project sponsors respond to final comments.
- November 7, 2018
 - Snohomish Basin LE submits final ranked list
- December 5-6, 2018
 - SRFB awards grants



2018 Project Proposals

- ★ Pilchuck Diversion Dam Removal
- ★ Hafner & Barfuse Floodplain Restoration
- ★ Thomas' Eddy Hydraulic Reconnection
- ★ Snohomish Confluence Acquisitions and Design
- ★ Reiner Farm Riparian Property Acquisiton
- ★ Middle Pilchuck River Integrated Restoration
- ★ People's Creek Habitat Enhancement



Pilchuck Dam Removal Restoration

#18-1671

Sponsor: Tulalip Tribes

Goal: Restore access of listed anadromous fish species to over 37 miles of primary habitat.

Objective: Full removal of the City of Snohomish Pilchuck River Diversion Dam.

SRFB request: **\$1,495,730**

Sponsor match: \$186,926

Total project cost: \$1,682,656



Hafner & Barfuse Floodplain Restoration #18-1628

Sponsor: King County

Goal: Restore natural riverine and floodplain habitat-forming processes along a high priority reach of the Snoqualmie River

Objective: Complete preliminary design of two flood facility set back projects on the Snoqualmie River at river mile 34, downstream of the Raging River and the town of Fall City.

2018 SRFB request: **\$999,600**

Sponsor match: **\$176,400**

Total project cost: **\$1,176,000**



Thomas' Eddy Hydraulic Reconnection #18-1617

Sponsor: Snohomish County

Goal: Improve the quality and quantity of channel edge and off-channel habitat and connectivity between the main channel, floodplain and associated floodplain water bodies.

Objective: Continue outreach and planning for Thomas' Eddy restoration on the Snohomish River.

SRFB request: **\$200,000**

Sponsor match: will be added

Total project cost: \$200,000+



Snohomish Confluence Acquisitions & Design #18-1720

Sponsor: Tulalip Tribes

Goal: Increase rearing and spawning habitat for Chinook, Steelhead, Pink and Chum salmon and measurably increase Coho production.

Objective: Acquire approximately 23 acres of forested riparian habitat with historical floodplain and disconnected side channel, at RM 1.5 on the Skykomish River in Monroe, WA.

SRFB request: **\$445,306**

Sponsor match: **\$81,645**

Total project cost: **\$526,951**



Reiner Farm Riparian Property Acquisition #18-1737

Sponsor: Tulalip Tribes & PCC Farmland Trust

Goal: Protect functioning riparian and floodplain habitat adjacent to key chinook spawning and rearing areas, and facilitate future restoration of additional riparian areas and access/flow through Haskel Slough.

Objective: Permanently protect up to 140 acres (80-140 acres) of forested riparian and floodplain habitat along 3 miles of the Skykomish River and Haskel Slough, across from the City of Monroe.

SRFB request: **\$788,687**

Sponsor match: **\$139,581**

Total project cost: **\$928,268**



Middle Pilchuck River Integrated Restoration #18-1914

Sponsor: Snohomish Conservation District

Goal: Improve habitat conditions for Chinook salmon

Objective: Complete preliminary design documents for edge, riparian, and side channel habitat restoration projects on prioritized parcels and reaches in the Middle Pilchuck River sub-basin.

SRFB request: **\$92,400**

Sponsor match: \$0

Total project cost: \$92,400



People's Creek Habitat Enhancement #18-1772

Sponsor: Snohomish Conservation District

Goal: Improve riparian and instream habitat quality and expand access to spawning and rearing habitat for adult Coho and juvenile Chinook and steelhead.

Objective: Enhance instream habitat near the mouth of Peoples Creek on a dairy farm in Monroe, WA in the lower Snoqualmie River basin.

SRFB request: **\$246,455**

Sponsor match: **\$90,750**

Total project cost: **\$337,205**



Withdrawn Projects

- Middle Pilchuck Habitat Restoration Project, Snohomish County
 - Next Steps – Recommended sponsor to work with Tech. Comm. basin partners to address design concerns
- Skykomish River Floodplain Forest Health & Restoration Project
 - Next Steps – Encouraged sponsor to work with basin partners to develop a knotweed strategy



Recommendations

Project Scoring Committee:

1. **Pilchuck Dam Removal Restoration**
2. **Hafner & Barfuse Floodplain Restoration**
3. **Thomas' Eddy Hydraulic Reconnection**
4. **Snohomish Confluence Acquisitions & Design**
5. **Reiner Farm Riparian Property Acquisition**
6. **Middle Pilchuck River Integrated Restoration**



Summary of SRFB & PSAR Funding	A	B	C
2018 Funding Requested	\$4,019,503	*\$2,495,330	**\$2,797,773
TOTAL FUNDING AVAILABLE	\$2,424,243	\$2,424,243	\$2,935,640
<i>Difference between Requested and Available Funds</i>	- \$1,595,260	\$71,087 1 project fully funded; 1 project mostly funded	-\$204,996 3 projects fully funded; 1 project mostly funded

*no loan

**with loan (full 2019 SRFB allocation)

