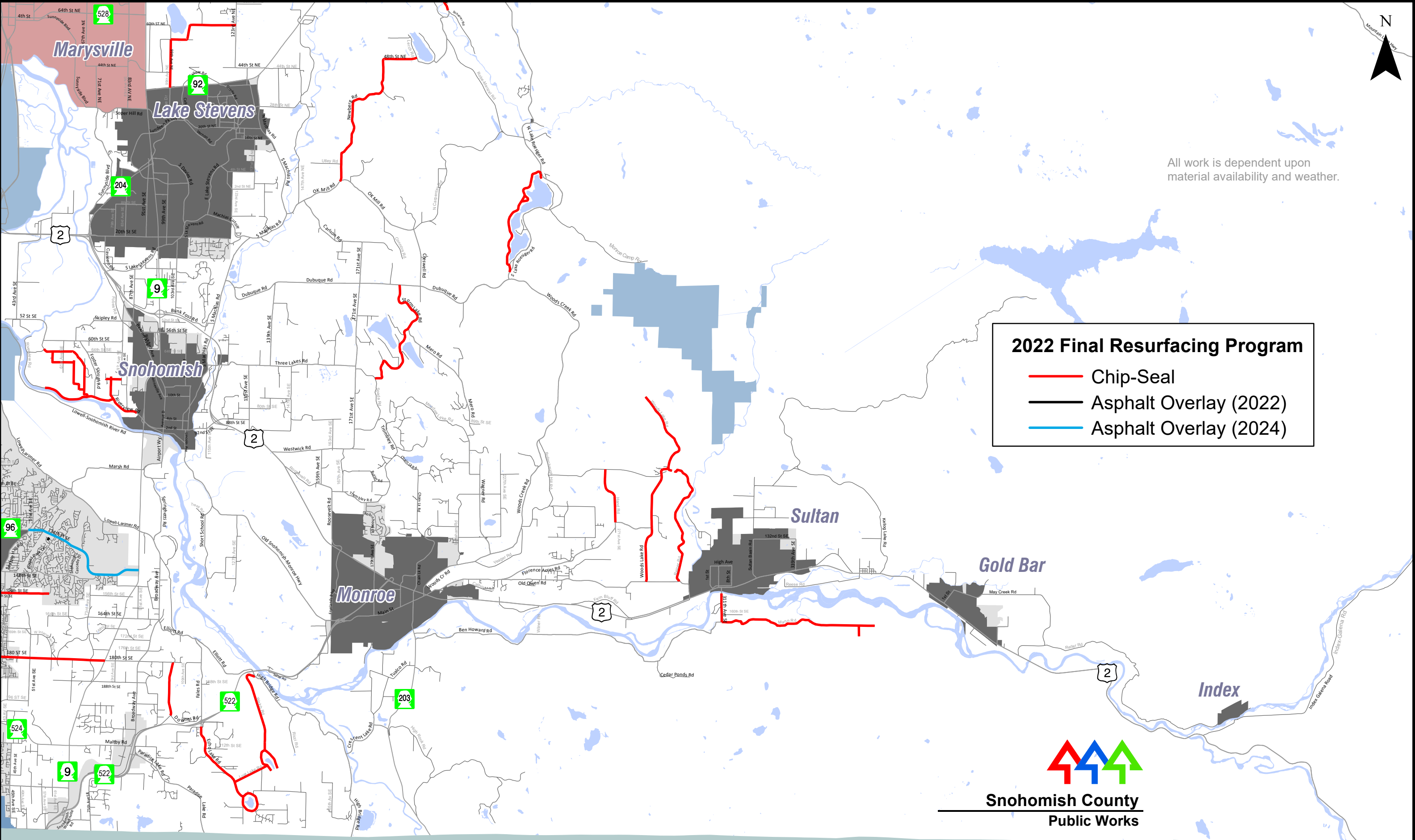




All work is dependent upon material availability and weather.

**2022 Final Resurfacing Program**

- Chip-Seal
- Asphalt Overlay (2022)
- Asphalt Overlay (2024)



**Snohomish County  
Public Works**

# 2022 Final Resurfacing Program - SE Quadrant

For Projects west of SR 9 see map for SW Quadrant

Snohomish County disclaims any warranty of merchantability or warranty of fitness of this map for any particular purpose, either express or implied. Any user of this map assumes all responsibility for use thereof, and further agrees to hold Snohomish County harmless from and against any damage, loss, or liability arising from any use of this map.