

Topic: Scope revision for SRFB project: TOLT River Conservation Grant, #13-1169

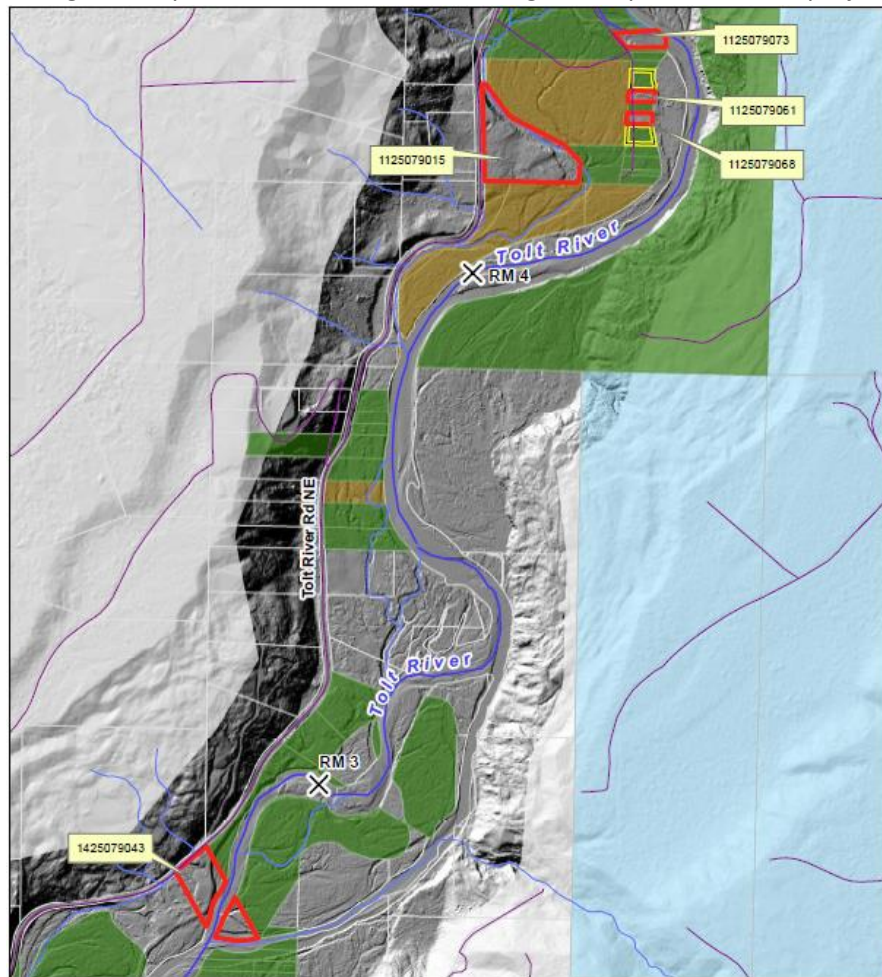
REQUEST: Project sponsor (King County) has requested adding a parcel to the current grant scope. The Scope change was approved by the Technical Committee via email on January 11, 2017.

Background:

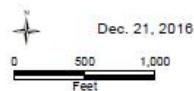
The grant was scoped to purchase several properties in the San Souci reach, some of which will provide the footprint to implement future projects to remove rubble revetment and other infrastructure and utilities and restore rive access to the floodplain.

King County currently has more funding remaining in the grant than what can be spent on the two vacant parcels in the neighborhood. They have requested that an additional parcel be added to the current grant scope. King County closed on the property in mid-January. SRFB project funds would be used to for the fee purchase and will be matched with King county Flood Control District funds.

King County will be purchasing vacant parcels that are within the original scope of the SRFB project with other funding sources.



Tolt River Conservation
Priority Parcels and SRFB Purchases



- Priority Parcel
- SRFB Purchase
- Public Land - County
- Public Land - City
- CE Snoqualmie Forest
- Parcels
- Roads
- River Miles

King County
Department of Natural Resources and Parks
Water and Land Resources Division

The information included on this map has been compiled by King County staff from a variety of sources and is subject to change without notice. King County makes no representations or warranties, express or implied, as to accuracy, completeness, timeliness, or rights to the use of such information. This document is not intended for use as a survey product. King County shall not be liable for any general, special, indirect, incidental, or consequential damages including, but not limited to, lost revenues or lost profits resulting from the use or misuse of the information contained on this map. Any sale of this map or information on this map is prohibited except by written permission of King County.

\\dnr\projects\WLRD\16087\Tolt_Acc_Dec2016_SRFB_Purchase.mxd TK