

# Snohomish Basin Salmon Recovery Technical Committee Meeting Summary

June 6, 2023, 9:00—11:00; Zoom

## Attendees

Matt Pouley, Tulalip Tribes (Chair)	Jonah Keith, Tulalip Tribes
Kaitlin Harris, Snoqualmie Watershed Forum	Josh Kubo, King County
Gretchen Glaub, Snohomish County	Julie Grobelny, WDFW
Carston Curd, Snohomish County	Keith Binkley, Snohomish County PUD
Morgan Ruff, Tulalip Tribes	Kyle Legare, Snohomish County PUD
Brett Shattuck, Tulalip Tribes	Lisa Tario, Snohomish County
Darcey Hughes, Snohomish County	Marty Jacobson, WA Dept of Ecology
Doug Hennick, Wild Fish Conservancy	Micaella Moore, Snohomish County
Elissa Ostergaard, Snoqualmie Watershed Forum	Mike Rustay, Snohomish County
Erin Ryan-Peñuela, Snoqualmie Watershed Forum	Rachel Benbrook, Department of Natural Resources
Greyson Hopkins, Snohomish County	Ryan Bartelheimer, Snohomish CD
Harry Richardson, Snohomish County	Sarah Yepez, Department of Ecology
James Lauder, Snohomish Conservation District	Steve Hinton, Tulalip Tribes
John Klochak, King County	Stuart Baker, Snohomish County

## Intros and Agenda Review

Chair Matt Pouley opened the meeting with introductions and outlined the agenda for participants.

## Mike Rustay Appreciation

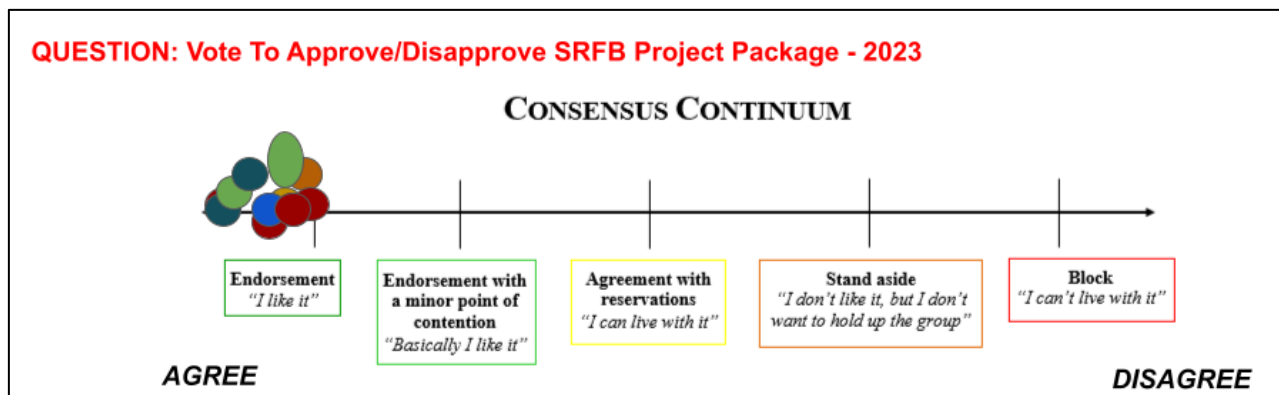
Gretchen Glaub spoke about former Technical Committee Co-Chair Mike Rustay's role in the Snohomish Basin and shared a slideshow of photos and memories as he transitions into his new role with Snohomish County.

## Regional and Basin Updates

### 2023 Snohomish Basin Grant Round

Lead Entity staff member Carston Curd outlined the ranked project list scored by the project review committee for the 2023 Snohomish Basin Salmon Recovery Funding Board (SRFB) grant round. Five projects have requested about \$1.65M, and the funding available from the State remains to be finalized but is likely between \$1.62M and \$1.68M. A summary of projects is presented on the following page.

Decision: **Committee members provided consensus to approve the SRFB Project package.**



Rank	Project	Sponsor(s)	Location	Description	Requested Funding	Local Review Score		State Review Designation
						Benefit to Salmon	Success Certainty	
1	Spencer Island <i>Final Design</i>	WDFW	Spencer Island (estuary)	Design and permitting costs to fully restore estuarine habitat on Spencer Island	\$500,000	91	87.2	Needs More Information
2	Getchell Wetland <i>Preliminary Design</i>	Ducks Unlimited	Southwest corner of Ebey Island (estuary)	Restore unrestricted connection between the river and a 7-acre wetland	\$114,000	80.2	76.7	Clear
3	Skykomish River Knotweed Assessment & Treatment	Snohomish County Surface Water Management	Lower to mid North Fork Skykomish, and county line of the South Fork Skykomish	Knotweed assessment, treatment and riparian revegetation, along with landowner outreach	\$370,090	73.1	77.7	Needs More Information
4	South Fork Skykomish River Riparian Restoration	Sound Salmon Solutions & King Co. Noxious Weed	River Miles 6.5 – 19: South Fork Skykomish	Continued knotweed treatment along with surveys, mapping, and landowner outreach, with revegetation in previously treated areas	\$366,975	72.8	78.3	Needs More Information
5	Japanese Gulch Daylighting – Final Design	City of Mukilteo	Shoreline just north of Mukilteo Ferry	Restore an historic pocket estuary by daylighting the mouth of Japanese Gulch Creek downstream of BNSF	\$299,848	57	72.3	Project of Concern
<b>Total Request</b>					<b>\$1,650,913</b>			
<i>Available Funding: \$1,624,956 - \$1,681,778</i>								

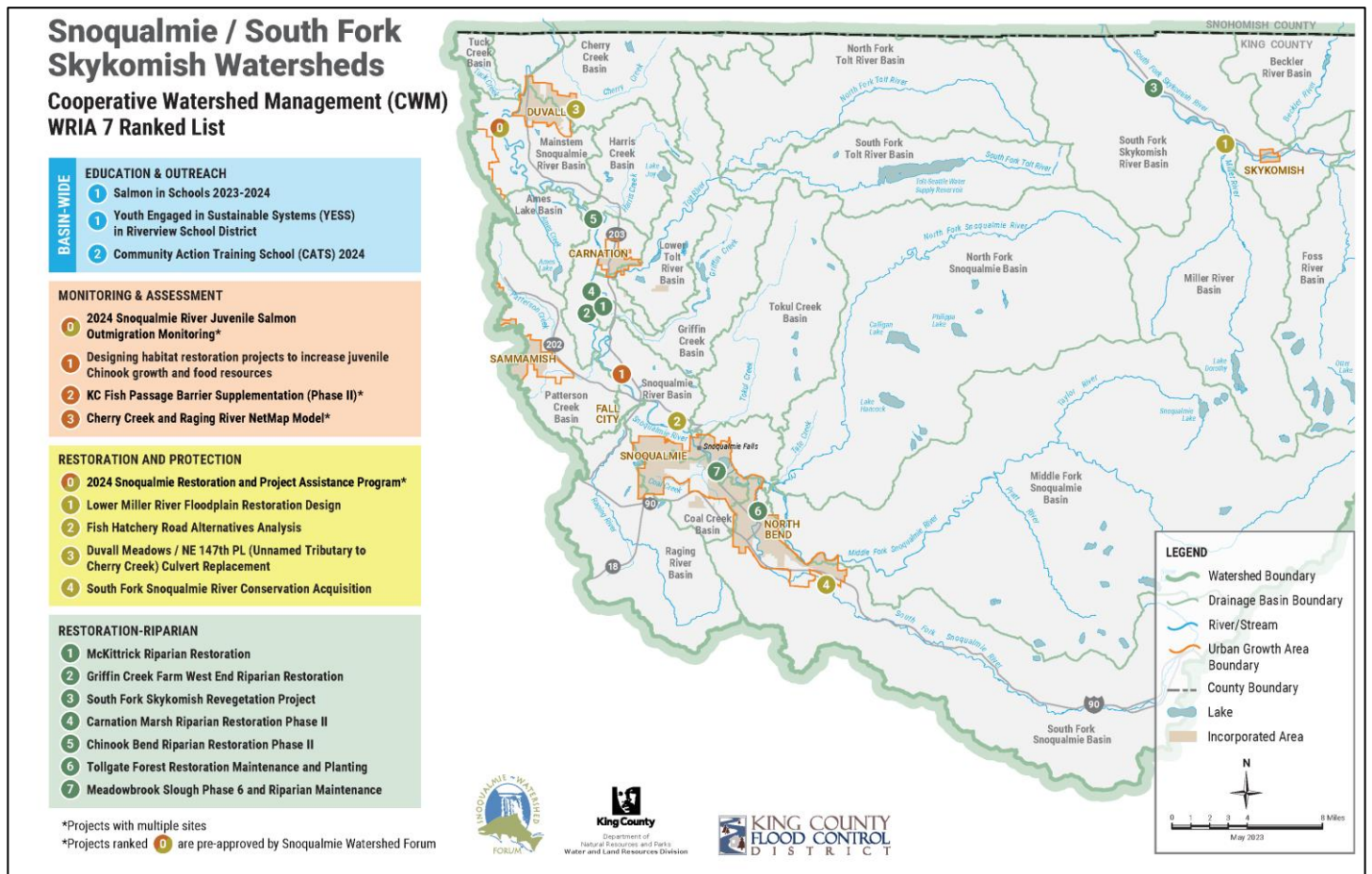
## Q&A

- What's with the 'Project of Concern' designation for the City of Mukilteo's project?
  - The application is missing critical documentation, and we won't know whether the State's designation will be adjusted until late July or August. Gretchen and Morgan are working with the City's grant manager to address application issues.
  - Depending on the outcome of the State's review, we may need to meet again later in the summer to discuss whether we stand by the project despite a possible final designation of 'Project of Concern'.

## Cooperative Watershed Management (CWM) Grant Round Update

Erin Ryan-Peñuela, Snoqualmie Watershed Forum staff, shared the status of the annual CWM grant round. Nineteen projects were approved by the Snoqualmie Watershed Forum for the \$2.3M fund in May, and the King County Flood Control District is currently going through their approval process between July and September.

Projects included Education & Outreach, Monitoring & Assessment, Restoration and Protection, and Riparian Restoration projects totaling \$3.08M in requests. The project review committee recommended funding all projects, with the shortfall accommodated by three of the projects at a lower funding level than requested.



View a larger image of this map in the [2023 CWM Presentation](#).

### Middle Pilchuck Habitat Restoration Project: 2023 Cost Increase

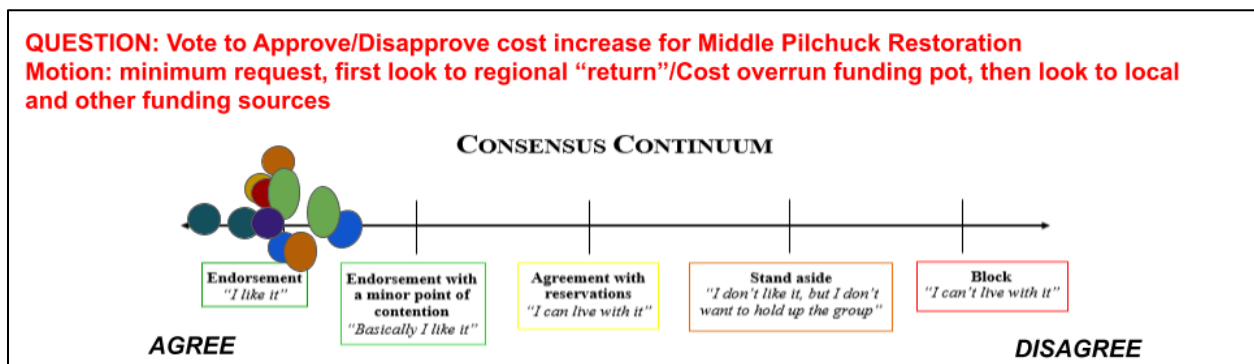
Lisa Tario with Snohomish County Surface Water Management presented on revised design and budget changes resulting in a request for additional budget for Snohomish County’s Middle Pilchuck Habitat Restoration Project. The project previously came through the 2018 SRFB grant round, ultimately being funded in the 2020 grant round. The county submitted for a cost increase due to design changes in 2022. The project was delayed and is again submitting for a cost increase in 2023 after receiving estimates. Hauling material, purchasing wood, and construction management are the sources of cost increases. Snohomish County is requesting between \$214,547 and \$369,750 depending on possible Surface Water Management funding availability.

Morgan Ruff outlined potential funding available from the 2023 grant round, as well as regional funding that may be available for cost increases such as Puget Sound Acquisition and Restoration ( ) Fund and SRFB. There may be flexibility in federal grants for funding of capital projects. A decision to approve a cost increase was advanced by the Technical Committee.

### Q&A

- What’s the timeline?
  - Asking for return funds from regional sources will require a decision to be made as soon as possible.
- What’s the reason why the Technical Committee should fund the maximum request over the minimum?
  - Surface Water Management had committed to funding a percentage contribution – any additional funding for cost increases will help to buffer.

**Decision:** Committee members provided consensus to approve the \$214,547 cost increase (minimum request) for the Middle Pilchuck Habitat Restoration Project.



### **Fish Passage Conversations**

Chair Pouley requested interim feedback from last month’s discussion on Fish Passage Barriers in an interactive slide deck for later use in a more in-depth conversation after the summer break.

### **Lower Frew Levee Setback Project**

Sarah McCarthy, Project Manager from King County, provided an update for the [Lower Frew Levee Setback Project](#). It’s located on the lower Tolt River near Carnation, WA, and the project was initiated in 2016 by King County. The project intersects with the Lower Tolt Levee Setback project at the mouth of the Tolt River which was completed in 2009.

The project is multi-benefit, looking to reduce flood risk, restore river processes, and provide trail access with a footprint of about 35 acres over about a half a mile of the lower Tolt River. The current levee overtops between a 2- and 5-year magnitude flood event. Construction for the project is tentatively targeted for 2026-2027.

The project is fully funded by the King County Flood Control District. Four concepts were presented, differing on extent and degree of levee removal, river reconnection, amount of perennial flow to downstream habitat, and magnitude of reduction in flood hazard for SR-203 alignment at the lower end of the project area. All alternatives have the same levee setback, amount of flood and channel migration protection, native material backfill of anthropogenic ponds, and Tolt River Trail alignment.

### Q&A

- Is the existing spur levy around a side channel included in the setback project?
  - A stormwater pond berm was historically built in the floodplain. Alternative One leaves the berm intact to redirect flow into the side channel area. Alternatives Two through Four include complete levee removal.
- What are the Flood Control District's metric priorities and what does the breakdown in cost look like for each alternative?
  - Increase in cost between alternatives is attributed mainly for SR-203 raising and bridge; whether the Flood Control District chooses to prioritize resiliency and infrastructure or ask for additional funders to step forward will be decided after the preferred alternative is presented. In early conversations, the district didn't like the idea of leaving remnant levee in the floodplain.
    - Alternative 1: \$16M (construction)
    - Alternative 4: \$25M (construction)
- How will the project prepare for expansion of restoration to the left bank (south shore) in the future?
  - As long as the full levee is removed from the right bank, additional work on the right bank side would not be necessary. If a larger bridge span for SR-203 was proposed in the future, more of the floodplain could be opened on the right bank – planned engineered logjams could potentially be removed in that scenario.

### **Round Table Updates**

- [Senior Habitat Specialist](#) position (role includes co-chairing the Technical Committee) with Snohomish County is still open.
- A [Habitat Engineer](#) position with Tulalip Tribes and also a [Conservation Project Manager](#) position is also open.

<p><i>Follow Up Items:</i></p>
--------------------------------

- |   |
|---|
| <p>1. Next meeting will occur on September 12, 2023</p> |
|---|