

2024 Comprehensive Plan Update

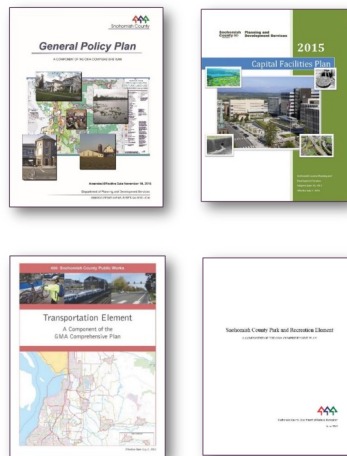


Under RCW 36.70A.130, Snohomish County and its cities/towns are required to:

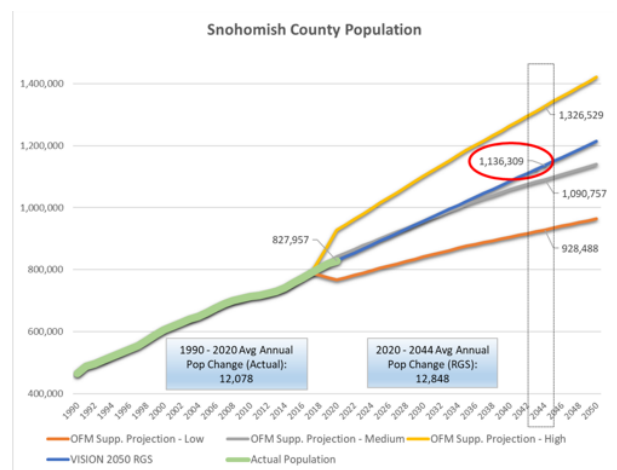
- Plan for the succeeding 20 year population and employment growth forecast; and
- Review and revise their comprehensive plans and development regulations to ensure the plan and regulations comply with the requirements of the GMA.

GMA Comprehensive Plan

The comprehensive plan was split into four separate documents and serves to guide County decisions and services on a wide range of topics. It also expresses the 20-year vision of unincorporated Snohomish County through goals objectives, policies and maps. Separate elements contain inventories, forecasts of future needs and financing strategies.



2044 Growth Targets

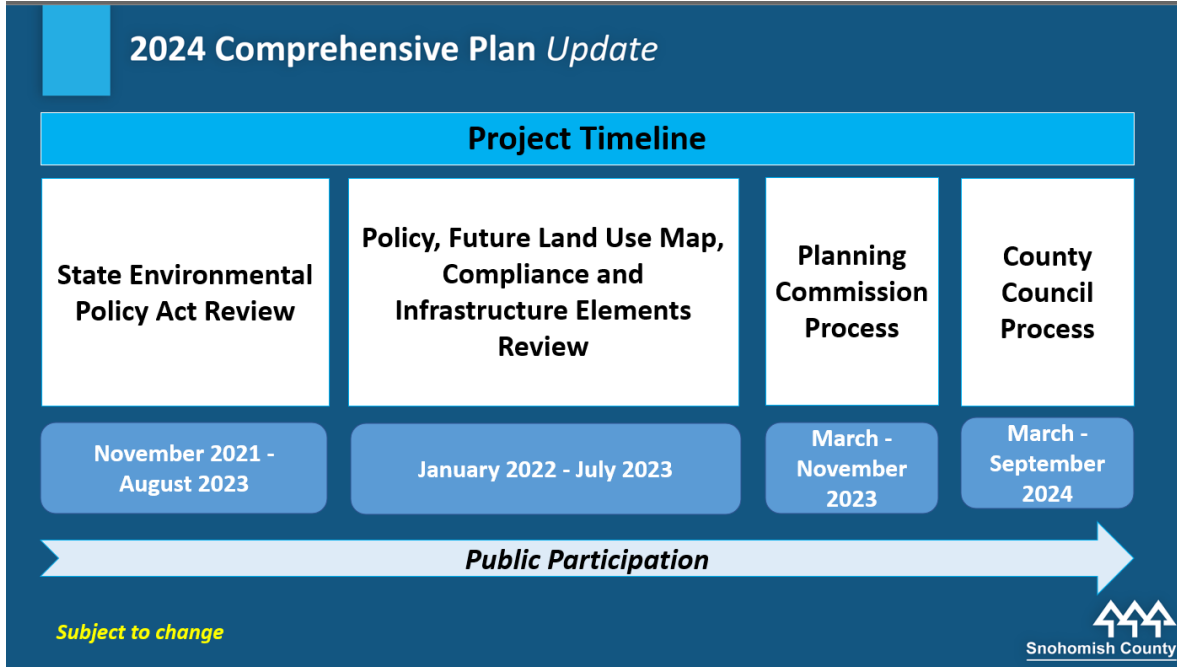


- The PSRC VISION 2050 Regional Growth Strategy (RGS) calls for a total county population of 1,136,309 by 2044.
- That's a population increase of 308,352 between 2020 and 2044 (827,957 county pop as of 2020 Census).
- 95.5% of the future population (2017-2050 period) directed to Urban Growth Areas.
- There is a new Office of Financial Management (OFM) forecast due in December of 2022

Buildable Lands Report (BLR)

The 2021 BLR documents the urban densities that are being achieved within both the city and county portions of the Urban Growth Area (UGA). Based on the densities achieved, the report determines whether each UGA has an adequate supply of suitable residential, commercial and industrial land to accommodate the population and employment growth projected to occur during the remaining portion of the 20-year GMA planning horizon.

Project Details



Climate Change Element

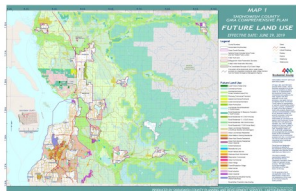
New in the 2024 Update, the Climate Change element contains two sub-elements focused on resiliency and mitigation. These sub-elements include:

- Policies for reducing greenhouse gas emissions
- A climate change-specific vulnerability and risk assessment
- Policies to build climate resilience and environmental health equity

Maps Update

Possible updates to several maps including, but not limited to:

- Future Land Use
- Zoning
- Transportation
- Capital Facilities
- Parks and Recreation



Policy Elements Update and Public Comment Phases

Between November 1st, 2022 and May 31st, 2023, the drafts of the updated elements of the comprehensive plan will be released in phases for 30-day public comment periods. These phases are:

- Population and Employment, Economic Development, Interjurisdictional Coordination (11/1-11/30)
- Land Use (12/31-1/31/23)
- Natural Environment, Tribal Coordination (2/1-3/2)
- Urban Core Subarea, Housing (3/1-3/31)
- Climate Change, Capital Facilities (3/31-5/1)
- Transportation, Parks and Recreation (5/1-5/31)

State Environmental Policy Act Review

The State Environmental Policy Act (SEPA) process identifies and analyzes environmental impacts associated with three different future growth scenarios (land use alternatives). The public will be invited to provide input on the scope of the environmental analysis. The public will also have an opportunity to comment on a Draft Environmental Impact Statements (DEIS) which describes the existing conditions, along with impacts and mitigation for each land use alternative. A Final EIS will be prepared responding to public comments on the draft EIS and analyze a preferred alternative.