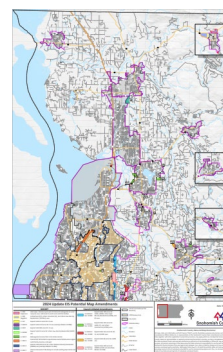


2024 Update Environmental Impact Statement (EIS) Alternatives Descriptions

Alternative 1 No Action: Adopted Plans, Lower Growth	Alternative 2 Medium Growth: Focus on High-Capacity Transit Communities	Alternative 3 Higher Growth
<p>This alternative assumes no changes to the future land use designations currently shown on the County's Future Land Use Map, and there will be no policy, zoning, or regulation changes associated with this alternative. Unincorporated Urban Growth Area (UGA) subareas build to capacity or Initial 2044 Targets, whichever is less, and rural area accommodates no more than 8.5% of county population growth. The transportation network is as described in the current comprehensive plan's adopted transportation element plus possible new projects to accommodate growth occurring between 2035 and 2044. This alternative accounts for the possibility that the population growth could be lower than the Vision 2050 population allocation for the county.</p>	<p>This alternative is consistent with the Vision 2050 total population and employment allocations for Snohomish County. It accommodates a large share of growth in the core of the Southwest UGA with emphasis around high-capacity transit stations. It also encourages a wider variety of housing types in single family neighborhoods within the existing UGA and re-designates and rezones some locations from Urban Low Density Residential to Urban Medium Density Residential on the Future Land Use Map in unincorporated areas that are within the unincorporated High-Capacity Transit Communities regional geography adopted in the Vision 2050. This alternative may include minor UGA adjustments. The rural area accommodates up to 4.5% of county population growth. This alternative relies on a multi-modal approach to transportation.</p>	<p>This alternative accounts for the possibility that population growth could be higher than the Vision 2050 population total for the county. Like Alternative 2, this alternative would focus a large share of growth in the core of the Southwest UGA near high-capacity transit stations, encourage a variety of housing types in single family neighborhoods, and allow for more medium density zoning within the existing UGA. This alternative factors in additional growth in the Southwest UGA near high-capacity transit stations. This alternative will include UGA expansion proposals the County Council identified with the final docket and Council-initiated motions for consideration as amendments to the comprehensive plan. Higher total county growth associated with UGA expansions would be assumed. The rural area accommodates 4.5% of county population growth. This alternative relies on a multi-modal approach to transportation, with new road projects to extend service to any UGA expansion areas.</p>

Locator Map of Final Docket and Council-Initiated Motions – Potential Map Amendments [Click Icon Below to Open]

[This map](#) shows the locations of the Final Docket XXI and Council-Initiated Potential Map Amendments identified for further study for the 2024 Comprehensive Plan Update EIS. The analysis within the EIS will help the Council decide whether to adopt all, some, parts of, or none of the final docket proposals and Council-Initiated Amendments into the Comprehensive Plan in 2024.



Links to Final Docket and Council-Initiated Motions – Potential Map Amendments

Final Docket XXI - Amended Motion No. 21-147	Council-Initiated Motions
<ul style="list-style-type: none"> • DR1 – Town of Darrington (Revised) • LS2 – City of Lake Stevens No. 2 • MALT1 – Vangemert • MON2 – Davis-Johnson • MV2 – Northpoint Development, LLC • SW10 – CS Real Estate Development, LLC • SW11 – McNeal (Withdrawn) • SW12 – Mietzner (Proposed code change) • SW14 – Petrie • SW17 – Town of Woodway (Revised) 	<ul style="list-style-type: none"> • Motion No. 22-090 referring a proposed expansion of Southwest UGA • Motion No. 22-095 referring a proposed expansion of the Lake Stevens UGA • Motion No. 22-098 referring a proposed expansion of the Maltby UGA • Amended Motion No. 22-099 referring a proposed expansion of the Monroe UGA • Motion No. 22-134 referring a proposed expansion of the Southwest UGA