

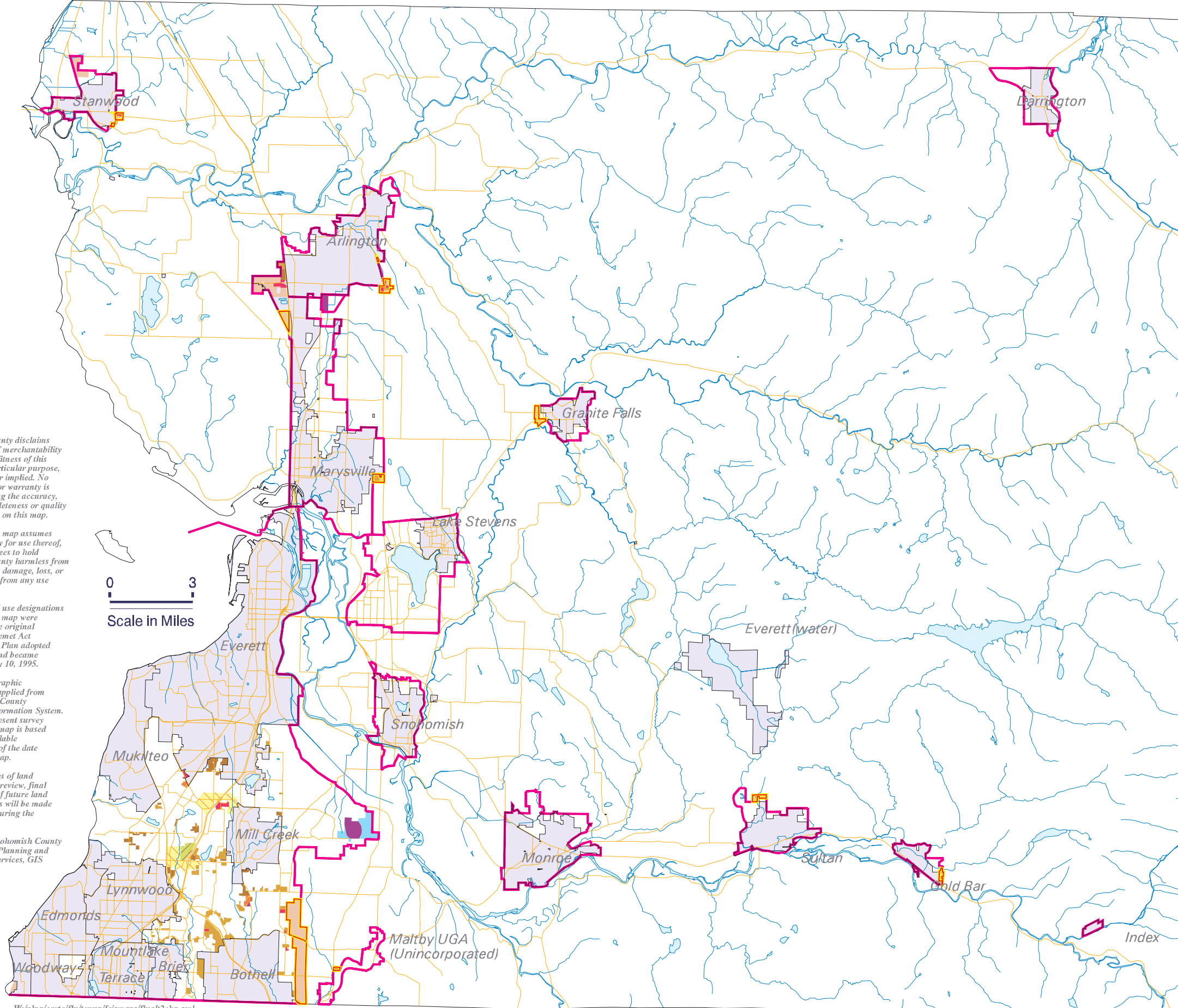
Changes to Future Land Use - Alternative 2

SNOHOMISH COUNTY 03/2004



LEGEND

- Urban Low Density Residential (3 DU/Acre)
- Urban Low Density Residential (4 - 6 DU/Acre)
- Urban Medium Density Residential (6 - 12 DU/Acre)
- Urban High Density Residential (12 to 24 DU/Acre)
- Public Use/Institutional
- Urban Commercial
- Urban Industrial
- Urban Village
- Urban Center
- Transit/Pedestrian Village
- Incorporated Cities
- Urban Growth Area Boundary
- UGA Expansion Area Boundary
- Incorporated City Boundary



Snohomish County disclaims any warranty of merchantability or warranty of fitness of this map for any particular purpose, either express or implied. No representation or warranty is made concerning the accuracy, currency, completeness or quality of data depicted on this map.

Any user of this map assumes all responsibility for use thereof, and further agrees to hold Snohomish County harmless from and against any damage, loss, or liability arising from any use of this map.

The future land use designations depicted on this map were derived from the original Growth Management Act Comprehensive Plan adopted June 28, 1995 and became effective on July 10, 1995.

This map is a graphic representation applied from the Snohomish County Geographic Information System. It does not represent survey accuracy. This map is based on the best available information as of the date shown on the map.

For the purposes of land use application review, final determination of future land use designations will be made by the County during the review process.

Produced by Snohomish County Department of Planning and Development Services, GIS Cartography.



W:\p\carto\fu\tenup\feismaps\fuall2chg.aml

DRAFT