



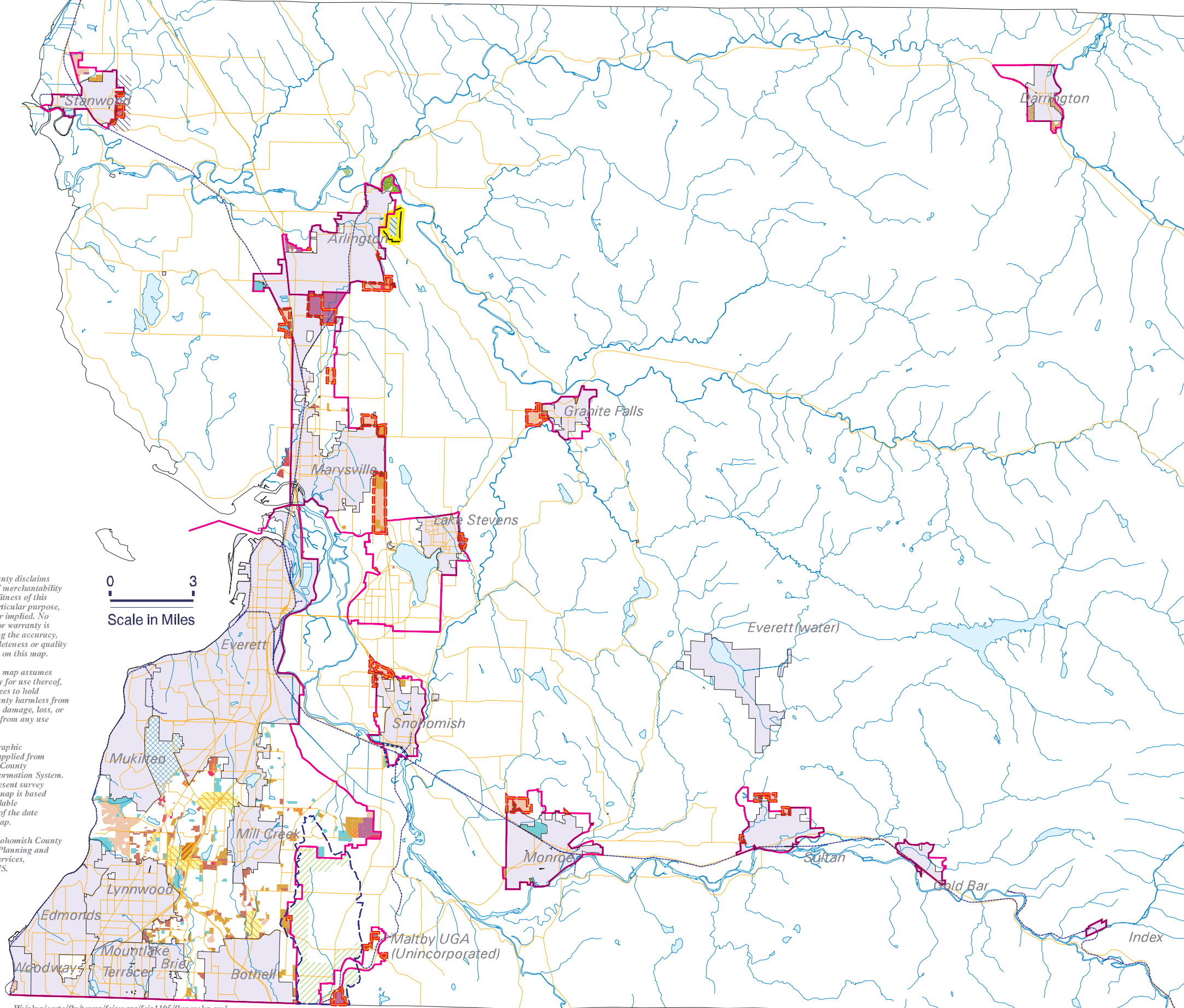
Snohomish County

# Changes to FLU - Planning Commission Recommended Plan

SNOHOMISH COUNTY 07/2005

## LEGEND

- National Forest (Includes some private and non-federal public lands)
- Local Forest (Tulip Only)
- Commercial Forest
- Commercial Forest - Forest Transition Area
- Local Commercial Farmland
- Upland Commercial Farmland
- Riverway Commercial Farmland
- Urban Horticulture
- Low Density Rural Residential (1 DU/20 Acres)
- Rural Residential-10 Resource Transition (1 DU/10 Acres)
- Rural Residential-10 (1DU/10 Acres)
- Rural Residential-5 (1 DU/5 Acres)
- Rural Residential - RD (1 DU/5 Acres)
- Rural Residential (1 DU/5 Acres Basic)
- Urban Low Density Residential (Gold Bar and Darrington)
- Urban Low Density Residential (Please see Map 6 of the GPP for additional detail)
- Urban Medium Density Residential
- Urban High Density Residential
- Public/Institutional
- Rural Freeway Service
- Clearview Rural Commercial
- Reservation Commercial
- Urban Commercial
- Urban Village
- Transit/Pedestrian Village
- Urban Center
- Manufacturing Industrial Center (Paine Field Area Overlay)
- Rural Industrial
- Urban Industrial
- Incorporated Cities and Towns
- Rural/Urban Transition Area Overlay
- Removal of Rural/Urban Transition Area Overlay
- Other
- Urban Growth Area Boundary
- Proposed UGA Expansion
- Transfer of Development Rights (TDR) Receiving Area Overlay
- Incorporated City Boundary
- Arterial Roadway
- Railway
- This portion of the Snohomish UGA is under review pursuant to a requested Conditional Letter of Map Revision from the Federal Emergency Management Agency.
- Little Bear Creek ESA Drainage Basin



0 3  
Scale in Miles

Snohomish County disclaims any warranty of merchantability or warranty of fitness of this map for any particular purpose, either express or implied. No representation or warranty is made concerning the accuracy, currency, completeness or quality of data depicted on this map.

Any user of this map assumes all responsibility for use thereof, and further agrees to hold Snohomish County harmless from and against any damage, loss, or liability arising from any use of this map.

This map is a graphic representation supplied from the Snohomish County Geographic Information System. It does not represent survey accuracy. This map is based on the best available information as of the date shown on the map.

Produced by Snohomish County Department of Planning and Development Services, Cartography/GIS.

W:\p\carto\flu\tenup\feismaps\feis1105\fluprchg.aml

Changes to Future Land Use - Planning Commission Recommended Plan  
FIGURE 2.3-5