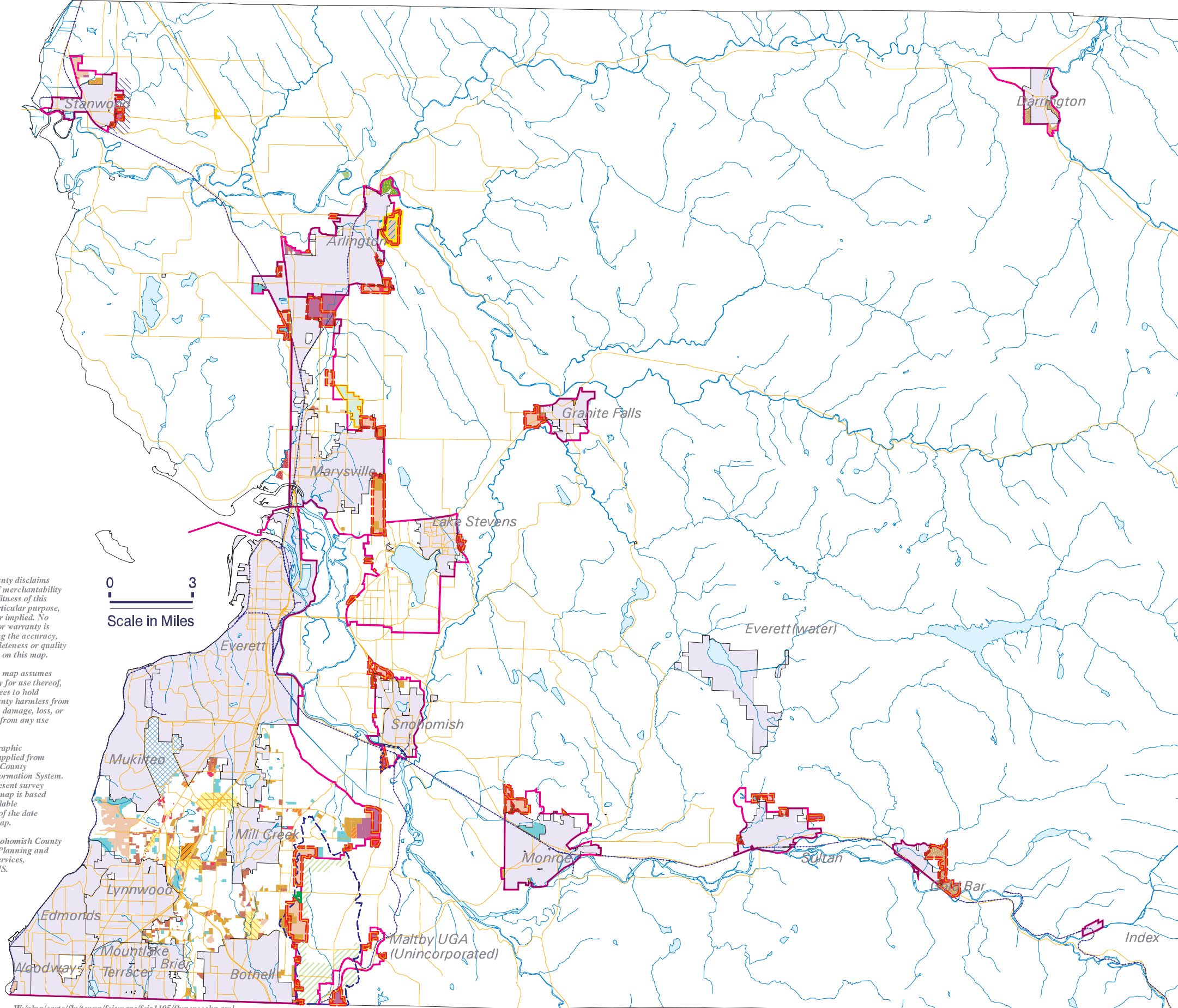


Changes to FLU - County Council FEIS Map List

SNOHOMISH COUNTY 11/2005



LEGEND

- | | |
|---|--|
| National Forest (Includes some private and non-federal public lands) | Areas Not Changing Land Use - Tribal Lands, & Rights-of-Way |
| Local Forest (Tulip Only) | Rural/Urban Transition Area Overlay Added |
| Commercial Forest | Rural/Urban Transition Area Removed within the Little Bear Creek Watershed |
| Local Commercial Farmland | Transfer of Development Rights (TDR) Sending Area Overlay |
| Upland Commercial Farmland | Transfer of Development Rights (TDR) Receiving Area Overlay |
| Riverway Commercial Farmland | Incorporated City Area |
| Urban Horticulture | Urban Growth Area Boundary |
| Low Density Rural Residential (1 DU/20 Acres) | Proposed UGA Expansion |
| Rural Residential-10 Resource Transition (1 DU/10 Acres) | Transfer of Development Rights (TDR) Receiving Area Overlay |
| Rural Residential-10 (1 DU/10 Acres) | Incorporated City Boundary |
| Rural Residential-5 (1 DU/5 Acres) | Arterial Roadway |
| Rural Residential - RD (1 DU/5 Acres) | Railway |
| Rural Residential (1 DU/5 Acres Basic) | This portion of the Snohomish UGA is under review pursuant to a requested Conditional Letter of Map Revision from the Federal Emergency Management Agency. |
| Urban Low Density Residential (Gold Bar and Darrington) | Rural Revisions |
| Urban Low Density Residential (Please see Map 6 of the GPP for additional detail) | UGA Removal |
| Urban Medium Density Residential | Little Bear Creek ESA Drainage Basin |
| Urban High Density Residential | |
| Public/Institutional | |
| Rural Freeway Service | |
| Clearview Rural Commercial | |
| Reservation Commercial | |
| Urban Commercial | |
| Urban Village | |
| Transit/Pedestrian Village | |
| Urban Center | |
| Manufacturing Industrial Center (Paine Field Area Overlay) | |
| Rural Industrial | |
| Urban Industrial | |

Snohomish County disclaims any warranty of merchantability or warranty of fitness of this map for any particular purpose, either express or implied. No representation or warranty is made concerning the accuracy, currency, completeness or quality of data depicted on this map.

Any user of this map assumes all responsibility for use thereof, and further agrees to hold Snohomish County harmless from and against any damage, loss, or liability arising from any use of this map.

This map is a graphic representation supplied from the Snohomish County Geographic Information System. It does not represent survey accuracy. This map is based on the best available information as of the date shown on the map.

Produced by Snohomish County Department of Planning and Development Services, Cartography/GIS.

0 3
Scale in Miles

W:\p\carto\flu\tenup\feismaps\feis1105\fluprcchlg.aml

Changes to Future Land Use - County Council FEIS Map List
FIGURE 2.3-7